



FREUND[®]
... your tool



SHEET METAL ROOFING TOOLS | ROOFING TOOLS





For more than 160 years we have been pursuing a family tradition, namely the design and the manufacturing of our state of the art special handcrafted tools **MADE IN GERMANY** for the roofing, sheet metal, plumbing and carpentry industries. We are specialized in high quality, traditional and innovative hand tools for craftsmen working on roofing and sheet metal roofing.

Our longtime experience has certified our reputation as a leading manufacturer of the world's finest handmade tools used in the said industries.

Our objective is to allow craftsmen, by using our high quality ergonomical tools, to save time and money. By word of mouth, more and more craftsmen have joined forces with FREUND... your tool.

Our large and varied program includes thousands of tools in every design and size. Slate hammers, rippers, anvils with roofer's hammers, tile cutting pliers, manual scissors for cement tiles and fibers, hammers for plumbers, trowels, saws, knives, measuring tools, hatchets, axes, sheet metal scissors, special tools for roof and front walls, the list goes on ...

Concerning the manufacturing of top quality craftsmanship at FREUND, our tools are hand made, hand forged, heat treated, and we love our tools and our work. This has all contributed to FREUND's outstanding reputation.

We are ready to face any challenge regarding personal requirements that a customer might present us with and take pride in satisfying our customers with our innovative solutions.

SHEET METAL ROOFING TOOLS



08 Edge Rollers



11 Clinching Pliers



14 Seaming Tong



15 Folding Tools



19 Tin Snips



24 Pliers



25 Scrapers and Folding Pliers



26 Sheet Metal Hammers



29 Soldering Irons and Accessories



38 Pipe Expanders

ROOFING TOOLS



44 Slate Hammers



45 Anvils



45 Slate Cutters and Accessories



48 Slate Rippers



49 Roofers' Hammers

50 QR-Codes

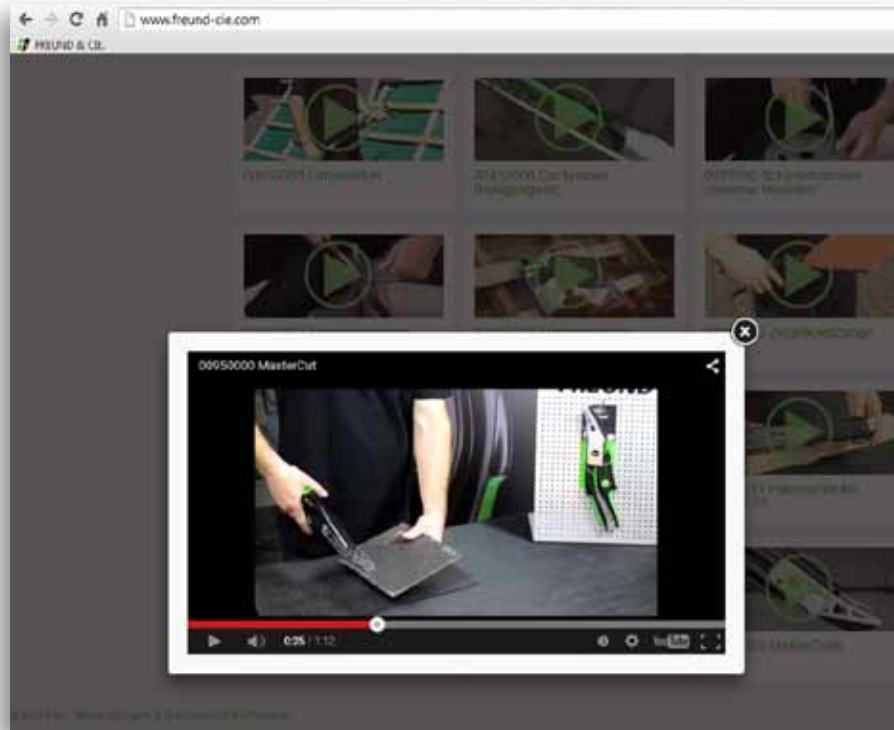
54 Index

Edition 2016



Daniel Schreiber, CEO FREUND
 Marcus Schnabel, CEO AMG

APPLICATION-VIDEOS



QR STANDS FOR QUICK RESPONSE

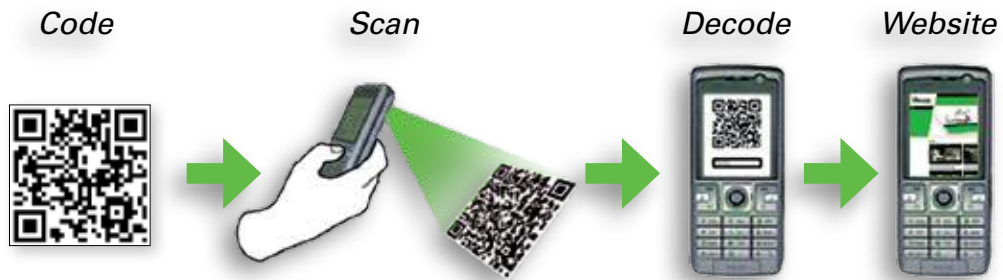
The QR-code replaces the typing of internet addresses and therefore saves time. Instead of typing the information the QR-code is scanned.

All that is needed is a Java compatible mobile telephone or a smart phone with camera. A program in the telephone analyzes the scanned code and decodes the information.

QR-CODES



*And this is how it works...
After scanning the QR-code you will be
automatically forwarded to the selected
application video.*



MAKE YOUR TOOL A FRIEND

QR-CODE READER

To be able to scan a QR-code using a smart-phone you will need a so-called Reader Software (QR-App). There are various suppliers for different phone models. Corresponding Apps can be downloaded for free under Android or in the App-Store.

Items with this symbol  will refer to the corresponding QR-code or relevant link.



**SHEET METAL
ROOFING TOOLS
... FROM FREUND**

SHEET METAL ROOFER
MAKE YOUR TOOL A FRIEND

FROM "A" FOR ALUMINIUM TO "Z" FOR ZINC

... FREUND has the right sheet metal tool for every operational purpose. Whether for aluminium, lead, copper or zinc, we offer appropriate tools or a selection of tools in a box for every assignment and purpose.



FREUND[®]
... your tool



**SHEET METAL
ROOFING TOOLS**

METAL - WORKING HAMMERS

Hand-made, precisely forged all the way through to the hand-finished polish of the hammer shaft. Together, with flat scrapers, angle flat scrapers, hatchet punches, tinman's anvils and other sheet metal tools, these are top quality products for a perfect application.

PLIERS AND SEAMING TONGS

The right pliers for every job. All our specialized tools are hand-made, hardened jaws and splits, honed and varnished. In addition, customized fabrications of specialized pliers are no problem for us.

METAL SNIPS AND SHEARS

All of our metal snips and shears are designed for a hard and professional job. It doesn't matter if it's a steel- or a HSS-snip, straight, right or left, with or without compound leverage, you choose the right snip for your job from our extensive assortment.



MAKE YOUR TOOL *A FRIEND*

- Easy edging and bending of sheet metal*
- Mobile Edge Rolling Machines applicable with all prevalent materials*
- Affordable and versatile*
- Sheet thicknesses:*
 - zinc, aluminium: 19 Gauge*
 - copper: 22 Gauge*
 - steel: 23 Gauge*
 - stainless steel, rust-proof: 26 Gauge*





01 / FREUND DISK ROLLER

Bends 90° profiles to maximum 180°, bending height: min. 3/8" max. 1 5/8;" no alignment or adjustment work necessary, expandable with a second Disk Roller and adapter to become a Double Disk Roller, bends sheets with the max. of 20 gauge strength, application of eaves and gutter flashings, alterations, etc.



QR-code page 50

91611000	2.05 lb	6 3/4" x 2 1/4"	1
----------	---------	-----------------	---



02 / FREUND DISK ROLLER DOUBLE

Bends 90° profiles to maximum 180°, bending height: min. 3/8" max. 1 5/8;" no alignment or adjustment work necessary, bends sheets with the max. of 20 gauge strength, application of eaves and gutter flashings, alterations, etc.



QR-code page 50

91610000	6.04 lb	6 3/4" x 9 7/8"	1
----------	---------	-----------------	---



03 / FREUND RADIUS ROLLER 25

For edging curved sheet metal and producing tight radii (inner and outer radii), the handle has been constructed for an optimal power transmission / compound leverage, measurements in both cm and inch, the bending height is infinitely adjustable, can bend from 1/4" – 1;" sheet metal up to 22 gauge



Radius 25	91630000	1.92 lb	7 1/4" x 3 3/4"	1
-----------	----------	---------	-----------------	---



04 / FREUND RADIUS ROLLER 50

For edging curved sheet metal and producing tight radii (inner and outer radii), the handle has been constructed for an optimal power transmission / compound leverage, measurements in both cm and inch, the bending height is infinitely adjustable, can bend from 1/4" - 2;" sheet metal up to 22 gauge

Radius 50	91631000	2.03 lb	8 5/8" x 3 3/4"	1
-----------	----------	---------	-----------------	---



05 / FREUND STANDARD EDGE ROLLER

Easy-to-read scale (mm + inch), loops to hang from work belt, expandable with a second Standard Edge Roller and adapter to become a dual bending machine, bending height: 1/4" – 7 7/8;" suitable for small radii



QR-code page 50

91602000	3.07 lb	11 3/4" x 4 3/8"	1
----------	---------	------------------	---



06 FREUND STANDARD EDGE ROLLER DOUBLE

Easy-to-read scale (mm + inch), loops to hang from work belt, bending height: 1/4" – 7 7/8"



QR-code page 50

91620000	7.72 lb	14 5/8" x 8 7/8"	1
----------	---------	------------------	---



07 FREUND MAXI EDGE ROLLER

Mobile edge rolling machine for the edging and bending of sheet metal, equipped with four guiding rollers, easy-to-read scale (mm + inch), hand grip, expandable with a second Maxi-Edge Roller and adapter to become a dual bending machine, loops to hang from work belt, bending height: 1/4" – 13 3/4"

91604000	5.12 lb	17 3/4" x 5 7/8"	1
----------	---------	------------------	---



08 FREUND MAXI EDGE ROLLER DOUBLE

Mobile edge rolling machine for the edging and bending of sheet metal, equipped with four guiding rollers, easy-to-read scale (mm + inch), loops to hang from work belt, bending height: 1/4" – 13 3/4"

91604100	9.81 lb	19 1/4" x 9"	1
----------	---------	--------------	---



09 FREUND PREMIUM EDGE ROLLER

Equipped with four guiding rollers, easy-to-read scale (mm + inch), loops to hang from work belt, expandable with a second Premium Edge Roller and adapter to become a dual bending machine, bending height: 1/4" – 7 7/8"



91603000	3.53 lb	11 3/4" x 5 7/8"	1
----------	---------	------------------	---



10 FREUND PREMIUM EDGE ROLLER WITH HAND GRIP

Mobile edge rolling machine for edging and bending of sheet metal, applicable to all prevalent materials, equipped with four guiding rollers, easy-to-read scale (mm + inch), loops to hang from work belt, hand grip, expandable with a second Premium Edge Roller and adapter to become a dual bending machine



QR-code page 50

91600000	4.29 lb	11 3/4" x 5 7/8"	1
----------	---------	------------------	---





11 / FREUND PREMIUM EDGE ROLLER DOUBLE

Equipped with four guiding rollers, easy-to-read scale (mm + inch), loops to hang from work belt, bending height: 1/4" – 7 7/8"



91601000	8.60 lb	14 5/8" x 11 3/4"	1
----------	---------	-------------------	---



12 / ADAPTER FOR FREUND EDGE ROLLER

Adapter to become a dual bending machine

for Edge Roller Premium double	91600001	1.90 lb	13" x 7 1/8"	1
for Edge Roller Standard double	91600002	1.76 lb	13" x 5 1/2"	1
for Edge Roller Disc Roller double	91610001	2.32 lb	9 7/8" x 2"	1
for Maxi Edge Roller	91600004	2.64 lb	8 7/8" x 19 1/4"	1



13 / HAND GRIP FOR FREUND EDGE ROLLER

Hand Grip for FREUND Maxi-, Premium- and Standard Edge Roller

91600003	0.77 lb	11 3/4" x 4 3/8"	1
----------	---------	------------------	---



14 / FREUND PERFECT BENDER S-150

0,63 " stainless steel rods with laser marking, stainless steel ball bearings, bending wheel at 80° angles can be adjusted depending on the thickness of the materials, highest quality and functionality

91640000	2.87 lb	5,9"	1
----------	---------	------	---



15 / FREUND DISC ROLLER S-MODEL

Bending from 90° - 180°, insertion depth from 0,32x1.0", material thickness up to 0,04" easy handling, perfect glide- and bending features

91612000	2.20 lb	5,5x3,9x4,7"	1
----------	---------	--------------	---



16 SMALL CLINCHING PLIERS

45° bent, lap joint, precoated handles



insertion depth	jaw width	QR-code page 51			
1 1/8"	7/8"	01090022	0.42 lb	7/8"	1

17 CLINCHING PLIERS

45° bent, lap joint, precoated handles



insertion depth	jaw width	QR-code page 50			
1 7/8"	1 5/8"	01090040	1.32 lb	1 5/8"	1
1 7/8"	2 3/8"	01090060	1.54 lb	2 3/8"	1
1 7/8"	3 1/8"	01090080	2.04 lb	3 1/8"	1

18 CLINCHING PLIERS

90° bent, lap joint, precoated handles



insertion depth	jaw width	QR-code page 50			
2 1/8"	1 5/8"	01092040	1.32 lb	1 5/8"	1
2 1/4"	2 3/8"	01092060	1.65 lb	2 3/8"	1
2 5/8"	3 1/8"	01092080	2.32 lb	3 1/8"	1

19 CLINCHING PLIERS

45° bent, lap joint, precoated handles



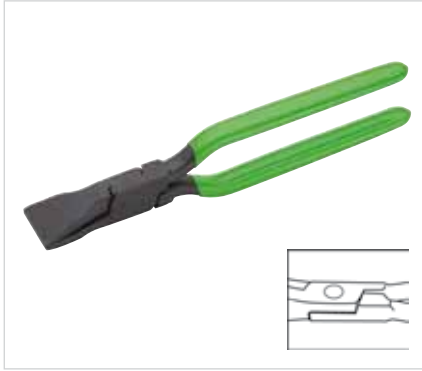
insertion depth	jaw width	QR-code page 51			
2 5/8"	3 7/8"	01090100	2.54 lb	3 7/8"	1

20 SMALL CLINCHING PLIERS

Straight, lap joint, precoated handles



insertion depth	jaw width	QR-code page 51			
1 1/4"	7/8"	01080022	0.4 lb	7/8"	1



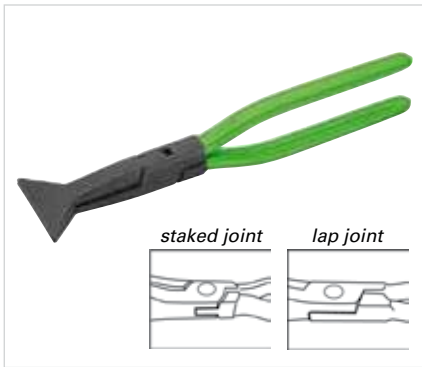
21 CLINCHING PLIERS

straight, lap joint, precoated handles



QR-code page 50

insertion depth	jaw width				
1 7/8"	1 5/8"	01080040	1.21 lb	1 5/8"	1
2 1/2"	2 3/8"	01080060	1.54 lb	2 3/8"	1
2 1/2"	3 1/8"	01080080	1.98 lb	3 1/8"	1



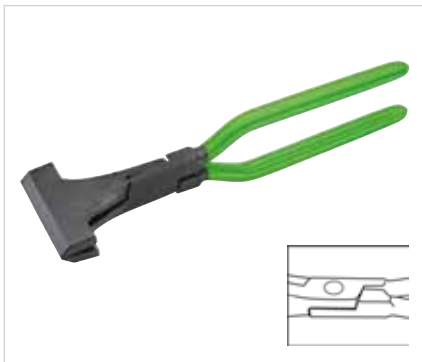
22 CLINCHING PLIERS

Straight, lap joint, precoated handles



QR-code page 50

	jaw width				
	staked joint 3 1/8"	01100080	1.87 lb	3 1/8"	1
	lap joint 3 1/8"	01100081	1.76 lb	3 1/8"	1

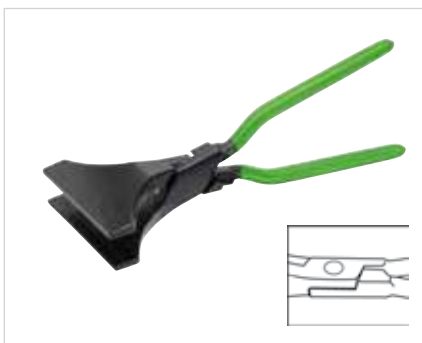


23 CLINCHING PLIERS

Straight, lap joint, precoated handles



insertion depth	jaw width				
2 1/2"	3 7/8"	01080100	2.54 lb	3 7/8"	1



24 BROAD CLINCHING PLIERS

Straight, lap joint, precoated handles



QR-code page 50

insertion depth	jaw width				
2 1/4"	3 3/8"	01080101	1.92 lb	3 3/8"	1



25 CLINCHING PLIERS, STAINLESS STEEL

Straight, lap joint, especially for the treatment of stainless steel sheets, precoated handles



insertion depth	jaw width				
1 5/8"	2 3/8"	01080061	1.21 lb	2 3/8"	1



26 / ROUNDED CLINCHING PLIERS

Lap joint, precoated handles

insertion depth	jaw width				
1 5/8"	7/8"	01094018	1.10 lb	7/8"	1



27 / UNIVERSAL CLINCHING PLIERS

Lap joint, precoated handles

insertion depth	jaw width				
2 5/8"	2 3/8"	01071300	1.76 lb	2 3/8"	1



28 / CORNER CLINCHING PLIERS

Lap joint, precoated handles



insertion depth	jaw width				
2 5/8"	2 3/8"	01170060	2.76 lb	2 3/8"	1

QR-code page 154



29 / SEAM OPENING PLIERS

Lap-on joint, precoated handles



jaw width					
1 1/8"	01070250	0.99 lb	9 1/8"	1	

QR-code page 51



30 / FLAT NOSE PLIERS

Precoated handles



insertion depth					
1 3/4"	01370240	0.93 lb	9 1/2"	1	

QR-code page 50





31 / TOOL ROLL WITH CLINCHING PLIERS

High quality tool roll consisting of 1 x clinching pliers 2 3/4" straight (no. Nr. 01080060), 1 x clinching pliers 2 3/4", 45° angled, (no. 01090060), 1 x clinching pliers 2 3/4", 90° angled (no. 01092060)



04670058	5.16 lb	92.1	1
----------	---------	------	---

32 / ROUND NOSE PLIERS

Precoated handles



insertion depth

2 3/8"

QR-code page 51

01360240	0.36 lb	9 1/2"	1
----------	---------	--------	---

33 / SEAMING TONGS

Straight, lap joint



insertion depth

jaw width

4 7/8"

4 3/4"

4 7/8"

4 3/4"

6 3/8"

6 1/4"

6 7/8"

7 1/8"

7 1/4"

7 1/4"

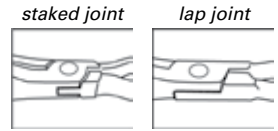
QR-code page 51

01141120	4.08 lb	4 3/4"	1
01141140	4.23 lb	4 3/4"	1
01141160	6.62 lb	6 1/4"	1
01141180	7.50 lb	7 1/8"	1
01141200	7.17 lb	7 1/8"	1



34 SEAMING TONGS

Straight, 45° tapered on one side

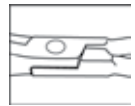


insertion depth	jaw width				
staked joint	6 7/8"	01140181	7.50 lb	6 7/8"	1
lap joint	6 7/8"	01141181	7.50 lb	6 7/8"	1

35 SEAMING TONGS

Bent, lap joint

insertion depth	jaw width				
4 3/8"	4 3/4"	01161120	4.08 lb	4 3/4"	1
4 3/8"	4 3/4"	01161140	4.19 lb	4 3/4"	1
6 1/4"	6 1/4"	01161160	6.50 lb	6 1/4"	1
6 1/4"	7 1/8"	01161180	6.73 lb	7 1/8"	1
6 1/4"	7 7/8"	01161200	7.06 lb	7 7/8"	1

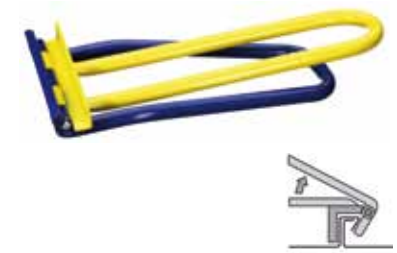


36 SQUARE SEAM FOLDER 111 WFSCH

This manually operated squareseamfolder joins SPM 30/80 profiles, smooth lead-on avoid marks at the transitions, it is easy to handle when working on extreme angular sheathing, the tool may also be used for vertical as well as for horizontal beads, tool width: 8 2/3"; claw height: 2"; length: 15 1/3"

QR-code page 52

durable baked epoxy finish	91100000	4.41 lb	8 2/3"	1
----------------------------	----------	---------	--------	---



37 SQUARE SEAM FOLDER, UPRIGHT 128 WFSCHST

For prefabricated SPM-profiles on small roof areas. For efficient use and transportation handles can be adjusted in length in 3 steps, tool width: 8 5/8"; height: 28 3/8"; length: 2 3/4"



QR-code page 52

durable baked epoxy finish	91101000	7.72 lb	8 5/8"	1
----------------------------	----------	---------	--------	---



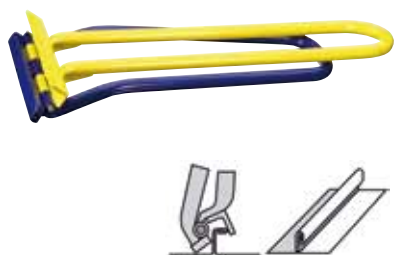
38 TWIN SQUARE SEAM FOLDER 117 WDF

It allows simple and quick shaping of locked squareseam into double-seam in just one operation, do not use to close a squareseam! Tool width: 8 2/3"; clawheight: 2"; length: 28 3/8"



QR-code page 52

durable baked epoxy finish	91170000	5.51 lb	8 2/3"	1
----------------------------	----------	---------	--------	---





39 TWIN SQUARE SEAM FOLDER, UPRIGHT 131 WDFST

For use like no. 91170000 Do not use to close a squareseam!
Tool width: 8 2/3"; height: 2 3/4"; length: 28 1/3"

QR-code page 52

durable baked epoxy finish	91171000	7.94 lb	8 2/3"	1
----------------------------	----------	---------	--------	---



40 EAVES EDGER 105 TK

Toolwidth of 10" allows quick and accurate sheet metal shaping constructing eaves, gutters, dormer windows etc., if needed a spacer can be put on at the eccentric pivot to create edges in excess of 90° as for high lips and waterbeads at inner eaves, tool width: 10"; clawdepth: 1 1/2"; length: 91/2"



QR-code page 50

durable baked epoxy finish	91070000	3.75 lb	10"	1
----------------------------	----------	---------	-----	---



41 EAVES CLOSING JAW 106 TSCA

The jaw width of 8 3/4" enables quick and accurate folding of eaves sheet, tool width: 8 3/4"; height: 2 1/3"; length: 15 3/4"



QR-code page 50

durable baked epoxy finish	91080000	4.63 lb	8 3/4"	1
----------------------------	----------	---------	--------	---



42 EAVES RULER 120 TRL

One time adjustable scale of required length of the sheet excess (incl. extension), Put eaves ruler to the edge of the eaves sheet, push along and mark out, then the cutted sheets can be folded cleanly with the eaves center or eaves closing tongs system Rau



QR-code page 50

durable baked epoxy finish	91230000	0.44 lb	4 3/4"	1
----------------------------	----------	---------	--------	---



43 SEMICIRCULAR DORMER SQUARESEAM FOLDER 119 RGS + 127 RGS

The squareseam-folder is the ultimate tool joining prefabricated SPM-profiles. Even at dormer windows with a small radius one joins lockseam without difficulty, it can be used to tack up lengthwise beads to prevent withdrawal from folding press, tool width: 2 1/2"; height: 2 1/8"; length: 13"

119 RGS durable baked epoxy finish (long)	91180000	2.21 lb	12 5/8"	1
127 RGS durable baked epoxy finish (short)	91181000	1.98 lb	8 1/4"	1



44 SHEETBENDING-JAW 101 BG 1010

Without difficulty leakproof and weldless gutters, ducts, high wallsheating, wallconnections etc. are constructed at the jobsite, unlimited working length, jaw width: 39 3/8", jawdepth: 31 1/2", tool depth: 4 1/3"

durable baked epoxy finish	91030000	30.87 lb	39 3/8"	1
----------------------------	----------	----------	---------	---



45 SHEETBENDING-JAW 102BG 500

Used like no. 91030000, jaw width: 19 5/8", jawdepth: 31 1/2", tooldepth: 4 1/3"

QR-code page 51

durable baked epoxy finish	91040000	15.21 lb	19 5/8"	1
----------------------------	----------	----------	---------	---



46 TILE EDGER PEK

One gets a unique tool building any slope at tile edges, jaw length: 9 7/8", height: 1 1/2", tool length: 27 1/2"



durable baked epoxy finish	91150000	6.62 lb	9 7/8"	1
----------------------------	----------	---------	--------	---



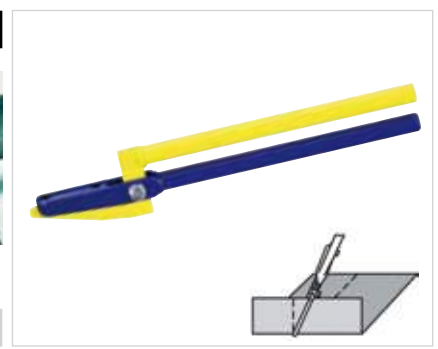
47 TILE EDGER, SMALL 116 PEK

One gets an unique tool building at any slope for tile edges, jaw length: 2 3/4", height: 1 1/2", tool length: 14 1/4"



QR-code page 52

durable baked epoxy finish	91160000	1.65 lb	2 3/4"	1
----------------------------	----------	---------	--------	---



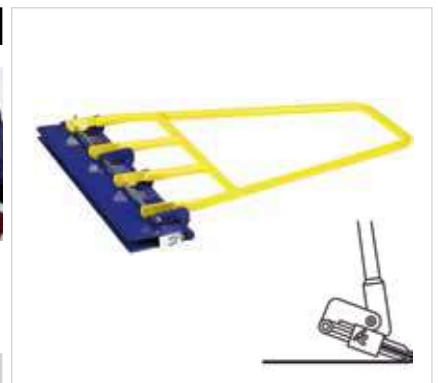
48 TINEDGE-JAWS 104 BKZ

Upright beads at double seam roofing are built effortless with the Tinedge-jaws, tool width is 19 3/4" and jawdepth selectable from 3/4" to 2 1/3", the upright bead is built into steps, first erect lip by 45° at its full length, then it is bend up to 90°, tool width: 19 3/4", length: 24 1/2", tong depth: 2 1/3"



QR-code page 52

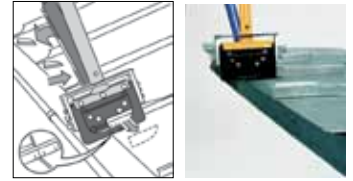
durable baked epoxy finish	91010000	15.44 lb	19 3/4"	1
----------------------------	----------	----------	---------	---





49 / CLIPPING SHEARS SYSTEM 133 AKW

These clipping shears are the optimal solution gaining time in getting an accurate finish of a gutter and eave. Clipping plain sheet, upright-seam and square-seam can be done, the AKW is easy to handle in the workshop as well as at the jobsite clipping preprofiled beads on the roof or at facades, after clipping the lower bead the upper one can be mounted and seamed, it may be clipped after roofing is complete, this allows effective work and the investment will pay for itself soon, tool width: 8 2/3", height: 4", length: 29 1/8"



QR-code page 50

durable baked epoxy finish	91190000	11.03 lb	8 2/3"	1
----------------------------	----------	----------	--------	---



50 / HAND CUTTING SYSTEM HSG

Particularly for exact and clean cuts on all kinds of sheet metal up to thickness of 21 gauge, cutting length 39 1/4", the set comprises: hand cutter, guide bar, gloves



	91240000	2.65 lb	43 3/4"	1
--	----------	---------	---------	---



51 / TWINSEAM FOLDER 112 DPF

This tool makes a manual accurate lock-seam just by spreading the levers, dosed application of weight onto the implement relieves strain from the arms, cost saving of the twinseam-folder is without competition working small roof-areas and corner-constructions, the implement is independent of any current source, it's application starts at a 1 1/2"-2" seam height, tool width: 8 2/3", length: 33 1/2", width: 6 1/3"



durable baked epoxy finish	91060000	13.89 lb	8 2/3"	1
----------------------------	----------	----------	--------	---



52 / SINGLE-HANDED-EDGER 108 HK

Suitable for sheet metal up to 1/3" this is the all-round-tool for roofer, plumber, tin smith and panelbeater, adjustable stops support making edges from 1/4" to 3/4" freehand, with a tool width of 2 1/3" you bend sheet metal in any length, tool width: 2 1/8", height: 3 1/8", length: 11 5/8"



durable baked epoxy finish	91110000	1.54 lb	2 1/8"	1
----------------------------	----------	---------	--------	---



53 / CRIMPER / FOLDING TONGS 114 FD

This snaker is a unique tool tapering any tube caliber by setting a few pleats, most times just for 2 3/4" pleats make an accurate fitting, high stability of the joint tubes gained by a large supporting surface is the big advantage of this tool, tool length: 13 3/8", jaw depth: 2 3/4", width: 1 5/8"



durable baked epoxy finish	91020000	1.76 lb	13 3/8"	1
----------------------------	----------	---------	---------	---

WITH FREUND YOU WILL CUT WELL

TYPES OF SNIPS



*Standard Snips -
forged from a single piece;
the cutting force is determined by the proportion of
handle length to cutting length.*


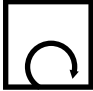
*Snips with leverage -
Cutting head and handle create mounted flexibly, so
that a leverage is obtained. The leverage means that
less force is required.*


RIGHT CUTTING / LEFT CUTTING SNIPS


*Right snips allow an easy cutting of right circles.
Left snips allow an easy cutting of left circles.*




#	cutting performance in gauge		
	zinc	stainless steel	
01222251	18"	22"	
01223251	18"	22"	
01228476	18"	22"	
01229476	18"	22"	
01224276	18"	22"	
01225276	18"	22"	
01252261	18"	22"	
01253261	18"	22"	
01256281	18"	22"	
01257281	18"	22"	
01280240	15"	18"	
01281240	15"	18"	
01290240	15"	18"	
01291240	15"	18"	
01290260	15"	18"	
01291260	15"	18"	
01292260	15"	18"	
01292261	15"	18"	
01295260	15"	18"	
01295261	15"	18"	
01293260	15"	18"	
01293261	15"	18"	
01290180	20"	22"	
01290181	20"	22"	


#	cutting performance in gauge		
	zinc	stainless steel	
01230301	18"	22"	
01230351	18"	22"	
01231301	18"	22"	
01232301	18"	22"	
01233301	18"	22"	
01282240	18"	22"	
01294260	15"	18"	
01294261	15"	18"	
01240251	18"	22"	
01241251	18"	22"	
01222251	18"	22"	
01223251	18"	22"	
01228476	18"	22"	
01229476	18"	22"	
01224276	18"	22"	
01225276	18"	22"	
01225276	18"	22"	


 straight, continuous

 release

 straight and right
cutting

 straight and left
cutting

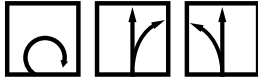
 straight, right and
left cutting

 circular



54 / PUNCH SNIPS

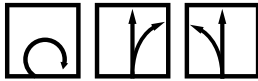
Stainless steel, HRC 59 (blue)



right	01222251	1.10 lb	9 ⁷ / ₈ "	1
left	01223251	1.10 lb	9 ⁷ / ₈ "	1

55 / PUNCH SNIPS

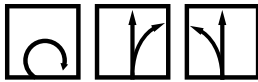
HSS-special stainless steel with high carbide blades, HRC 65 (purple/black) for stainless steel sheets



right	01228476	1.12 lb	10 ⁷ / ₈ "	1
left	01229476	1.14 lb	10 ⁷ / ₈ "	1

56 / PUNCH SNIPS WITH CURVED BLADES

Stainless steel, HRC 59 (blue)



right	01224276	1.10 lb	10 ⁷ / ₈ "	1
left	01225276	1.10 lb	10 ⁷ / ₈ "	1

57 / TINMEN'S/PELIKAN SNIPS

PVC-coated handles, HRC 56 (green)



right	01230301	1.65 lb	11 ³ / ₄ "	1
right	01230351	1.83 lb	13 ³ / ₄ "	1
left	01231301	1.62 lb	11 ³ / ₄ "	1

58 / TINMEN'S/PELIKAN SNIPS

Stainless steel, HRC 59 (blue)



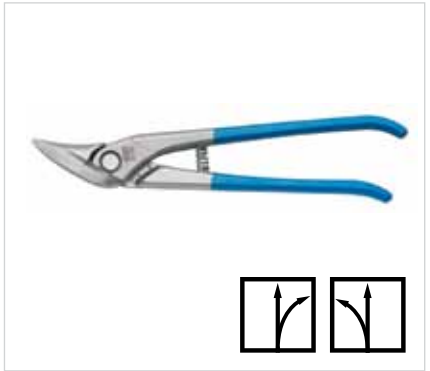
right	01232301	1.61 lb	11 ³ / ₄ "	1
left	01233301	1.61 lb	11 ³ / ₄ "	1



59 COMBINATION CUTTING SNIPS

Stainless steel, HRC 59 (blue)

right	01252261	1.09 lb	10 1/4"	1
left	01253261	1.09 lb	10 1/4"	1



60 COMBINATION CUTTING SNIPS

Special stainless steel with high carbide blades, HRC 65 (purple/black)

right	01256281	1.32 lb	11"	1
left	01257281	1.35 lb	11"	1



61 GENUINE AVIATION SNIP

Stainless steel, compound leverage, for stainless steel sheets, HRC 58-60, bi-component grip



QR-code page 50

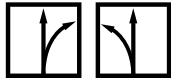
straight	01282240	0.63 lb	10 1/4"	1
----------	----------	---------	---------	---





62 / GENUINE AVIATION SNIPS

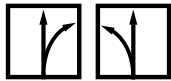
Stainless steel, compound leverage, for stainless steel sheets, HRC 58-60, bi-component grip



right	01280240	0.83 lb	9 1/2"	1
left	01281240	0.82 lb	9 1/2"	1

63 / OFFSET CUTTING SNIPS

Stainless steel, compound leverage, for stainless steel sheets, HRC 58-60, bi-component grip

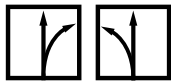


QR-code page 51

right	01290240	0.86 lb	9 1/2"	1
left	01291240	0.86 lb	9 1/2"	1

64 / OFFSET CUTTING SNIPS

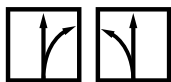
Stainless steel, compound leverage, for stainless steel sheets, HRC 58-60, bi-component grip



right	01290260	1.20 lb	10 1/4"	1
left	01291260	1.20 lb	10 1/4"	1

65 / SHAPE AND STRAIGHT CUTTING SNIPS

Special high quality steel, double compound leverage, for stainless steel sheets, HRC 61



QR-code page 51

right	01292260	0.99 lb	10 1/4"	1
left	01292261	0.99 lb	10 1/4"	1

66 / SHAPE AND STRAIGHT CUTTING SNIPS

Special high quality steel, double compound leverage, for stainless steel sheets, HRC 61



QR-code page 51

right	01294260	1.22 lb	10 1/4"	1
left	01294261	1.22 lb	10 1/4"	1



67 TOOL ROLL WITH GENUINE AVIATION SNIPS

High quality tool roll (129), consisting of Tinnman's snip, right (no. 01290240) and Genuine aviation snips, left (no. 01291240), tool roll (128) consisting of Genuine aviation snips, right (no. 01280240), Genuine aviation snips, left (no. 01281240) and Genuine aviation snips, straight (no. 01282240)



Tool Roll 129	04670059	1.98 lb	1,98	1
Tool Roll 128	04670060	2.70 lb	1,98	1

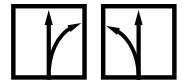
68 OFFSET CUTTING SNIPS

HSS-stainless steel, compound leverage, for stainless steel sheets, HRC 65



QR-code page 51

right	01295260	1.15 lb	10 ¼"	1
left	01295261	1.15 lb	10 ¼"	1



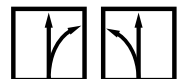
69 OFFSET CUTTING SNIPS

Special high quality steel, double compound leverage, for stainless steel sheets, HRC 61



QR-code page 51

right	01293260	1.06 lb	10 ¼"	1
left	01293261	1.06 lb	10 ¼"	1

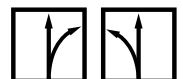


70 OFFSET CUTTING SNIPS „MINI“

Special high quality steel, double compound leverage, for stainless steel sheets, HRC 61

QR-code page 51

right	01290180	0.88 lb	7 ⅝"	1
left	01290181	0.88 lb	7 ⅝"	1



71 UNIVERSAL TIN SNIPS, LONGSTYLE PROFESSIONAL

Compound leverage, PVC-coated handles

right	01240251	0.99 lb	11"	1
left	01241251	0.99 lb	11"	1





72 / NOTCH-PUNCHING MACHINE

Ideal for notching vinyl sheet coated, zinc or aluminum, makes a notch of 1/8" x 5/8" adjustable depth stop from 3/8"-7/8", punches up to a thickness of 22 gauge



QR-code page 51

00360020	1.82 lb	12 1/4"	1
----------	---------	---------	---



73 / PUNCHING MACHINE

With replaceable punches, opening 3/8", precise graduation, adjustable depth stop up to 1 3/4", with punches



Punch	ø .13 inch	ø .16 inch	ø .19 inch	ø .24 inch
iron sheets	16 Gauge	16 Gauge	18 Gauge	22 Gauge
stainless steel	18 Gauge	20 Gauge	22 Gauge	25 Gauge
aluminium	11 Gauge	14 Gauge	14 Gauge	16 Gauge

QR-code page 51

00360010	2.13 lb	10 3/4"	1
----------	---------	---------	---



74 / HAND NOTCHER 35

For straight and parallel incisions eg. square seam folding on wall connection edges, the notching length of 3/8" enables continuous uninterrupted cuts, suitable for sheet steel up to 22 gauge



QR-code page 50

00371000	1.17 lb	11 3/4"	1
----------	---------	---------	---



75 / HAND NOTCHER

For light and easy profile cuts no matter how deep. Cuts sheet steel up to a thickness of 22 gauge



QR-code page 50

00370000	0.60 lb	9 1/16"	1
----------	---------	---------	---



76 / SCRIBER/SCRATCH/MARKING TOOL

Stainless steel, American scale 1/8" - 4 3/4" inch (in)



QR-code page 51

01133000	0.14 lb	5 1/2"	1
----------	---------	--------	---



77 FLIZ-FOLDER

Stainless steel, for bending sheet metal



QR-code page 50

01131000	0.66 lb	5 1/2" x 4 3/4"	1
----------	---------	-----------------	---



78 FLAT SCRAPER

Steel forged, long blade, prism 3/4" x 3/4" slightly slanted, 1/4" drilled

01150100	4.08 lb	3 7/8"	1
----------	---------	--------	---



79 FLAT SCRAPER

Forged, long blade, prism 1"x1" slightly slanted, 1/4" drilled



01150000	5.51 lb	5 1/2"	1
----------	---------	--------	---



80 DOUBLE WELT IRON

Forged, prism height 1" and 1 3/8"



QR-code page 50

01110000	7.50 lb	5 1/2"	1
----------	---------	--------	---



81 SQUEEZING FOLDING PLIER

Forged of special steel, depth 5 1/2"



QR-code page 52

01130000	1.87 lb	5 1/2"	1
----------	---------	--------	---





82 / HAMMER FOR ANGLE FLAT SCRAPER

Polished finish



$A=7/8"$ / $B=1/8"$

01121000

10.58 oz

4 3/4"

1



83 / ANGLE FLAT SCRAPER

Forged, polished and ground surfaces



QR-code page 50

01120000

3.42 lb

11 5/8"

1



84 / GROOVING HAMMER, DIFFERENT FACES

Differently curved faces, one face vertical, fine polished finish



$A=3/8"$ / $B=1 1/8"$

01691400

14.11 oz

13 3/8"

1



85 / POLISHING HAMMER

1 slightly curved, 1 strongly curved face, fine polished finish



$A=1 1/2"$ / $B=1 1/2"$

70710750

26.46 oz

5 1/8"

1



86 / LOCKSMITH'S HAMMER

DIN 1041, curved ashwood handle, special oval bolster

01710400

14.11 oz

12"

1



87 TINMAN'S HAMMER, PVC

Polydur, angular



QR-code page 52

01674000	19.40 oz	3 1/4" x 3 1/4" x 5 1/8"	1
----------	----------	-----------------------------	---



88 PVC HAMMER

PVC, round

01678060	15.87 oz	Ø 2 3/8" x 4 1/4"	1
01678070	19.05 oz	Ø 2 3/4" x 4 3/4"	1
01678080	27.87 oz	Ø 3 1/4" x 5 1/2"	1



89 PVC HAMMER

Polydur, angular

QR-code page 52

01678145	19.40 oz	5 3/4" x 1 3/8" x 3"	1
01678155	21.16 oz	6 1/8" x 1 3/8" x 3 3/8"	1



90 DEAD BLOW SOFT FACED HAMMER

With polished finish, lacquered, curved Hickory-handle, head of shock-resistant nylon, nature



Ø 1 1/4"	01670032	21.16 oz	13 3/4"	1
Ø 2"	01670050	41.62 oz	15 1/8"	1



91 WOODEN HAMMER

With metal ring

QR-code page 52

01676000	13.05 oz	Ø 2 3/8"	1
----------	----------	----------	---





92 / TINMAN'S HAMMER

Edged, beechwood hammer head, with hardwood handle



01673000	20.46 oz	3½" x 2"	1
----------	----------	----------	---



93 / TINMAN'S HAMMER

Round, beechwood hammer head, with hardwood handle

01672000	19.40 oz	Ø3½" x 6¼"	1
----------	----------	------------	---



94 / CHASE WEDGE

Hardwood, with cramp

01950000	0.23 lb	Ø2¾" x 7¼"	1
01951000	0.53 lb	Ø3½" x 8¾"	1



95 / BOSSING MALLET

Hardwood

01930060	0.67 lb	2¾" x 5¾"	1
----------	---------	-----------	---



96 / BOTTOM-SWAGE

groove width ¼"

groove width ⅜"

groove width ½"

01040006	0.83 lb	¼"	1
01040008	0.96 lb	⅜"	1
01040010	0.99 lb	½"	1



97 SOLDERING IRON SET IN A METAL BOX

Automatic soldering iron with Piezo ignition and gas-cartridge no. 66444000, 2 spare-gas cartridge no. 64440086, bottle for soldering fluid no. 03331000, 2 soldering fluid brush no. 03390000



QR-code page 52

66440000	6.84 lb	14 1/8"	1
----------	---------	---------	---

98 PREMIUM SOLDERING KIT

Includes express soldering iron for zinc, copper and stainless with automatic push button ignitor, swivel hose attachment, 70 seconds start up time, iron length 11 5/8"; iron weight 34.5 oz

Also included in the premium soldering kit:

- Medium Tip (9 oz, 3 3/4" length)
- Regulator (30 - 60 PSI, UL listed, compact design)
- LP Gas Quick Connects (for fast connection and disconnect of soldering iron and hose, no further tools needed, made of brass, LH 9/16)
- Hose (12" foot hose, UL listed)
- Soldering Block Holder (ammonia stone for soldering, brush holder, flux canister)
- Soldering Flux - Gel (for new metals (zinc and copper), gel is easy to handle and simple to use)
- Soldering Fluid Bottle (for soldering fluid, acids, etc., with screw cap)
- Soldering Fluid Brushes (25 pcs. in a bag, for soldering fluid, acids, oil, etc.)
- STACK - ON Pro-Tough Tool Box (23" galvanized steel hinge pins, large riveted nickel plated, steel draw bolts secure the lid, includes a deluxe, removable tray, fully lockable with padlock eye)



66440001	8.27 lb	22 7/8"	1
----------	---------	---------	---

99 STANDARD SOLDERING KIT

Includes express soldering iron for zinc, copper and stainless with swivel hose attachment, 80 seconds start up time, iron length 13 1/4"; iron weight 33oz

Also included in the standard soldering kit:

- Medium Tip (9 oz, 3 3/4" length)
- Regulator (30 - 60 PSI, UL listed, compact design)
- LP Gas Quick Connects (for fast connection and disconnect of soldering iron and hose, no further tools needed, made of brass, LH 9/16)
- Hose (12" foot hose, UL listed)
- Soldering Fluid Brushes (25 pcs. in a bag, for soldering fluid, acids, oil, etc.)
- STACK - ON Pro-Tough Tool Box (23" galvanized steel hinge pins, large riveted nickel plated, steel draw bolts secure the lid, includes a deluxe, removable tray, fully lockable with padlock eye)



66440002	7.27 lb	22 7/8"	1
----------	---------	---------	---

100 PERKEO KIT USA

Includes High-performance propane soldering iron with copper piece, ergonomically designed handle made of hard wood, very well insulated. Rotatable tube connection, for either M10x1 or G 3/8" LH. Valve seal made of Teflon. Back cap and valve rod made of stainless steel

Also included in the Perkeo kit USA:

- Soldering Iron Tip Pointed shaped with 3 7/8" pin, 0.77 lb
- Quick connector 2 part clutch with automatic gas cut for tool-free replacing of the torch with connected gas cylinder
- High Pressure Hose, HD-rubber hose, 12" foot hose, UL listed
- Stand, Foot stand and suspension hook for all heavy-duty soldering irons
- Wind Protection, for all heavy-duty soldering irons, made of robust sheet steel
- STACK - ON Pro-Tough Tool Box (16" galvanized steel hinge pins, large riveted nickel plated, steel draw bolts secure the lid, includes a deluxe, removable tray, fully lockable with padlock eye)



66660000	6,61lb	22 7/8"	1
----------	--------	---------	---



101 / SOLDERING IRON WITH PATENTED CERCO-BURNER

With Piezo ignition and rotational tube connection technical details: a circular flame surrounds the soldering iron tip which causes a quick warming up as well as a reduced gas consumption, soldering iron tip: 360° turnable, inclination angle adjustable by 10°, available in 4 models, metal bow: adjustable in 2 positions, with spring lock - 100% windprotection through combustion chamber -immediately ready for use through a new burning technique; the working temperature is reached after 1 minute -turnable tube makes an easy handling possible -armoured piezo-system with approx. 50.000 ignitions and 2 years warranty -GS/TÜV homologated



QR-code page 52

Spare Piezo Ignitor

66434000	2.21 lb	13 3/8"	1
66444002	0.44 lb	1 5/8"	1



102 / SOLDERING IRON WITH CERCO-BURNER

With rotatable tube connection



66432001	1.98 lb	13 3/8"	1
----------	---------	---------	---



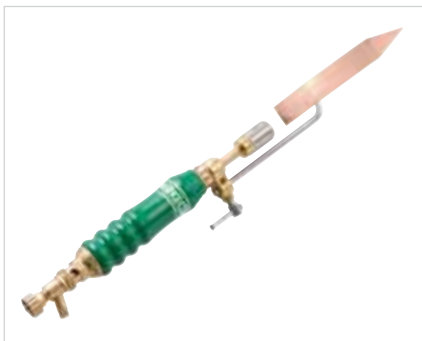
103 / AUTOMATIC SOLDERING IRON WITH GAS CARTRIDGE

With patented CERCO-burner and Piezo ignition, in each position immediately ready for use through its special cartridge, burning duration 1-2 hours through optimized burner, ideal for repairs, extremely handy, no tube, no gas bottle, TÜV/GS homologated



Spare Piezo Ignitor

66444000	2.43 lb	14 1/8"	1
66444002	0.44 lb	1 5/8"	1



104 / HIGH PERFORMANCE PROPANE SOLDERING IRON WITH COPPER PIECE

This high performance propane soldering iron is a sophisticated, quality product that is made only from the finest materials such as stainless steel, solid brass and teflon, exceptionally heavy duty, low maintenance and easy to operate, it is ideal for everyday use, despite moisture, solder chemicals or any other tough conditions, this iron will continue to function at the highest level, the high performance propane soldering iron burns straightaway, in less than 55 seconds the 0.77 lb soldering bit heats to the operating temperature, there's no easier or more time-saving method of soldering available, you can work with the powerful and constant flame even in strong winds and without using a windbreak, ergonomically designed handle made of hard wood, very well insulated. Rotatable tube connection, for either M10x1 or G 3/8" LH, valve seal made of Teflon, back cap and valve rod made of stainless steel, performance: 1,67 KW, Consumption with 1,5 bar: 130 g/h.

with copper tip, pointed shaped

66434100	2.18 lb	16 1/2"	1
----------	---------	---------	---



105 / HIGH PERFORMANCE SPARE GAS CARTRIDGE POWER GAS

Top burning capacity, temperature 2000°C, 6 bar pressure, recommended for low surrounding temperature, burning duration approx. 1-2 hours, suitable for soldering irons and heat guns, 26% Propene

64440086	115	170 / 110 ml	12
----------	-----	--------------	----

FREUND[®]
... your tool



MAKE YOUR TOOL **A FRIEND**

FREUND offers a complete line of soldering equipment for all sheet metal roofing needs:

- The Express Soldering irons with self ignition/combustion chamber system/built in gas canisters***
- A variety of tips in different sizes and weights***
- The unbeatable coated tips for soldering without filling and reforging***
- The soldering gel***
- The small things that you need to start the job right away, such as regulators, quick connects, hoses, brushes and ammonia stones***



106 / SOLDERING IRON TIP BENT

bent tip	66480002	0.53 lb	3 3/4"	1
----------	----------	---------	--------	---



107 / SOLDERING IRON TIP

light tip	66480003	0.41 lb	3 3/4"	1
-----------	----------	---------	--------	---



108 / SOLDERING IRON TIP

middle tip	66450001	0.52 lb	4 3/4"	1
------------	----------	---------	--------	---



109 / SOLDERING IRON TIP

heavy tip	66480001	0.69 lb	5 3/4"	1
heavy tip	66490004	1.46 lb	5 3/4"	1



110 / SOLDERING IRON TIP TURBO

20% faster heating of the copper tip by a special boring

middle tip	66460001	0.52 lb	4 3/4"	1
heavy tip	66470001	0.69 lb	5 3/4"	1



111 / SOLDERING IRON TIP, COATED

Soldering without ammonia stone and reworking



bent tip	66481002	0.53 lb	3 3/4"	1
----------	----------	---------	--------	---

112 / SOLDERING IRON TIP, LONGLIFE



light tip	66481003	0.41 lb	3 7/8"	1
-----------	----------	---------	--------	---

113 / SOLDERING IRON TIP, LONGLIFE



middle tip	66451001	0.52 lb	4 3/8"	1
------------	----------	---------	--------	---

114 / SOLDERING IRON TIP, LONGLIFE



heavy tip	66481001	0.70 lb	5 3/4"	1
-----------	----------	---------	--------	---

115 / SOLDERING IRON TIP

Hammer shaped with 3 7/8" pin



for soldering iron 66434100 	66490001	0.55 lb	3 1/2"	1
	66490002	0.77 lb	3 7/8"	1
	66490003	1.10 lb	3 7/8"	1



116 / SOLDERING IRON TIP

Pointed shaped with 3 7/8" pin

for soldering iron 66434100 **104**

66490005	0.55 lb	8 1/8"	1
66490006	0.77 lb	8 1/2"	1
66490007	1.10 lb	8 3/4"	1



117 / ZINNLUX LONGLIFE SOLDERING TIP

Pointed shaped, coated, with 3 7/8" pin

for soldering iron 66434100 **104**

66490008	0.53 lb	3 3/4"	1
----------	---------	--------	---



118 / SOLDERING IRON TIP, ZINNLUX

Soldering without ammonia stone and reworking, hammer shaped with 3 7/8" pin

for soldering iron 66434100 **104**

66491002	0.52 lb	4 3/8"	1
----------	---------	--------	---



119 / QUICK CONNECTOR

2 part clutch with automatic gas cut for tool-free replacing of the torch with connected gas cylinder

66640001	0.26 lb	2 3/4"	1
----------	---------	--------	---



120 / HIGH PRESSURE HOSE

HD-rubber hose, 12" foot hose, UL listed

66631000	1.87 lb	12"	1
----------	---------	-----	---



121 / ADAPTER USA

For propane soldering iron, with male and female thread

66640002	0.44 lb	0,63"	1
----------	---------	-------	---



122 / HIGH PRESSURE REGULATOR

High-pressure regulator, 30 - 60 PSI, UL listed



66620011	0.73 lb	5 3/8"	1
----------	---------	--------	---

123 / HOSE COUPLING

Threaded hose couplings with left hand thread, hose nipples with cap nuts, for soldering iron 66434100



screw thread M10x1LH, Ø 1/2" - Nipple	66650000	0.02 lb	SW 12 x 28	1
---------------------------------------	----------	---------	------------	---

124 / STAND

Foot stand and suspension hook for all heavy-duty soldering irons



for soldering iron 66434100	66420100	0.88 lb	3 3/8" x 3 1/4"	1
-----------------------------	----------	---------	-----------------	---

125 / WIND PROTECTION

For all heavy duty soldering irons, made of robust sheet steel



for soldering iron 66434100	66481001	0.70 lb	5 3/4"	1
-----------------------------	----------	---------	--------	---

126 / CAP FOR SCREEN HEAD

For screen head for heavy duty propane soldering iron, made of high quality stainless steel



for soldering iron 66434100	66420300	0.02 lb	Ø 3/4" x 1 1/8"	1
-----------------------------	----------	---------	-----------------	---



127 / SCREEN HEAD

For heavy-duty propane soldering iron, made of solid brass - with 11 bores for an optimum burning behavior

for soldering iron 66434100	104	66420400	0.13 lb	Ø 3/4" x 3/4"	1
-----------------------------	-----	----------	---------	---------------	---



128 / T - SCREW

For all heavy duty soldering irons, pin and screw made of galvanized steel - can be fixed by hand

for soldering iron 66434100	104	66420500	0.04 lb	1 1/2"	1
-----------------------------	-----	----------	---------	--------	---



129 / SPARE ORIFICE

For heavy duty propane soldering iron, made of solid brass, with 31 gauge tip bore for an optimum burning performance

for soldering iron 66434100	104	66420600	0.04 lb	1"	1
-----------------------------	-----	----------	---------	----	---



130 / SPINDLE WHEEL

Hand wheel with valve stem for KLEIN RISTA handle, manifolds, etc., made of shaped brass - valve stems made of high-quality stainless steel - gaskets of valves made of indestructible teflon - on the gas side with spring mechanism for exact flame adjustment - completely assembled

		66420700	0.07 lb	Ø 7/8" x 1 1/4"	1
--	--	----------	---------	-----------------	---



131 / GAS LIGHTER

Gun-shaped gas lighter - refill pack: 4/8" x 1/4" mm replacement flints in small box, for soldering iron 66434100 & 66432001

gas lighter		66520000	0.11 lb	6 1/4"	1
replacement flints, 12 pieces		66520010	0.04 lb	Ø 7/8" x 3/8"	1



132 / FLUX FOR TIN-SOLDER

For new metals (copper, zinc)

QR-code page 50

66400320	1.10 lb	320 g	12
----------	---------	-------	----



133 / FLUX FOR TIN-SOLDER

For oxidized metals (copper, zinc)

66401320	1.10 lb	320 g	12
----------	---------	-------	----



134 / SOLDERING FLUID BRUSH

Dark bristles, app. 10 - 15 mm wide, for soldering fluid, acids, oil etc.

25 pcs.	03390025	0.17 lb	3/8"	1
---------	----------	---------	------	---



135 / SOLDERING SET LÖT MAX

For easy soldering works, additional grip surface on roofs



QR-code page 52

soldering stone, tank, soldering fluid brush	03310000	0.44 lb	6 7/8" x 3 3/4"	1
--	----------	---------	-----------------	---



136 / SOLDERING SET LÖT MAX COMBI

For easy soldering works, additional grip surface on roofs



soldering stone, 2 tanks, 2 soldering fluid brushes	03311000	0.60 lb	9 7/8" x 3 3/4"	1
---	----------	---------	-----------------	---





137 / AMMONIA STONE FOR SOLDERING

For LÖT MAX and LÖT MAX COMBI

03322000	0.22 lb	3 1/8" x 2" x 3/4"	1
----------	---------	--------------------	---



138 / BOTTLE FOR HYDROCHLORIC ACID/SOLDERING FLUID

Polyethylene bottle



hydrochloric acid bottle, blue	03330000	0.20 lb	5 7/8"	1
soldering fluid bottle, yellow	03331000	0.20 lb	5 7/8"	1



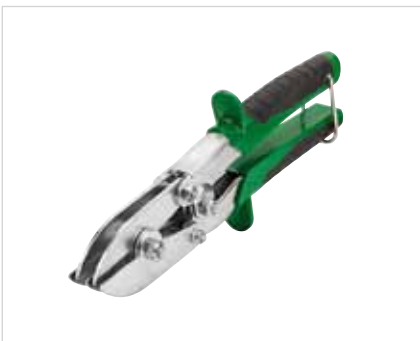
139 / GUTTER HANGER BENDER

Castor-roll, head made of malleable casting GTW 40, zinc-plated, steel tubes with plastic handles, for a bracket strength up to 1 5/8" x 3/8"



QR-code page 50

01000600	7.06 lb	23 5/8"	1
01000800	7.72 lb	31 1/2"	1



140 / PIPE CRIMPER WITH 5 BLADES

Progressive reduction of the pipe diameter, swaging up to 1 1/8"



01320002	1.09 lb	9 5/8"	1
----------	---------	--------	---



141 / EXPANDER FOR PIPES

For expanding all usual pipes of copper, aluminium and zinc, forward feed and reverse motion, hexagone, additional supplies: through belt ratchet for manual operation no. 01320010 and adaptor for SDS-plus record no. 01320020



QR-code page 50

special steel hardened, gun metal finish	01320076	3.18 lb	3"	1
	01320080	3.40 lb	3 1/8"	1
	01320100	4.96 lb	3 7/8"	1



142 / FREUND-TOGGLE JOINT HAND RIVETER

Head 360° rotatable, each corner can be reached, industrial quality, with 4 sizes of nose pieces



01302000	1.65 lb	11"	1
----------	---------	-----	---





ROOFING TOOLS **... FROM FREUND**

 **ROOFING TOOLS**
 **MAKE YOUR TOOL A FRIEND**

THE DESIGN OF ROOFS AND FACADES REQUIRES HIGH DEMANDS
... even for your tools. That's why we offer a large assortment of quality tools that are specialized and tailor-made for your work.



FREUND[®]
... your tool



ROOFING TOOLS

SLATE HAMMERS

Leading worldwide in variety and innovation, we offer a assortment on the highest level. Our unique slate hammers **Universo**[®] provide the answer to any open question concerning decorative slate covering.

SLATE RIPPERS

Who can offer more? There are many forms and lengths for a worldwide demand. Forged out of one piece, with a changeable or a solid blade either in stainless steel or with a flexible spring tempered blade – you decide.

MASTERCUT[®]

Light, manageable and strong. An excellent design, practical function and high quality all speak for the **MasterCut**[®] as well as for the other slate tools and machines from the FREUND-Production.

 **FREUND**®

... your tool



MADE IN GERMANY 
DEUTSCHES
WERKZEUG

OUR HANDMADE **FREUND** – SLATE RIPPER



Our slate ripper has been exclusively forged for you over the last 150 years



Handmade, produced from one piece – quality with long tradition



Each forging process produces a totally unique top quality tool







143 UNIVERSAL SLATER'S HAMMER UNIVERSO®, RIGHT/LEFT

The grinding of the facet is only on one side, for working on both sides of the anvil, with nail puller, handforged, lengthened leather handle, polished finish, head, tip and facets inductively hardened, with tip protection, patent no. 10 2006 002 234



QR-code page 51

right	00020651	22.9 oz	13 3/8"	1
left	00021651	22.9 oz	13 3/8"	1



144 SLATER'S HAMMER, AMERICAN DESIGN

Nail puller, handforged, leather handle, polished finish



right	ST052000	24 oz	12 5/8"	1
left	ST053000	24 oz	12 5/8"	1



145 SLATER'S HAMMER, IRISH DESIGN

Nail puller, handforged, leather handle, polished finish



right	00050000	23.3 oz	13"	1
left	00051000	23.3 oz	13"	1



146 SLATER'S HAMMER, CANADIAN DESIGN

	00076000	22,9 oz	12,6"	1
--	----------	---------	-------	---



147 SLATER'S ORNAMENT HAMMER UNIVERSO®, RIGHT/LEFT

Allows the design of arty shapes and nearly all kinds of geometric forms, for working on both sides of the anvil, specially for small radii, rough workings on slate possible, 100% hand-made



QR-code page 51

right	00074000	17.6 oz	11,9"	1
-------	----------	---------	-------	---



148 / SLATER'S ANVIL

Straightened, all edges ground, top bent, black

QR-code page 51

straight	00310000	1.2 lb	12 ¼"	1
----------	----------	--------	-------	---



149 / SLATER'S ANVIL

Straightened, all edges ground, top bent, black

QR-code page 51

bent	00311000	1.2 lb	12 ¼"	1
------	----------	--------	-------	---



150 / ERGO-CUT SLATE CUTTER, NATURAL SLATE AND FIBRE-CEMENT

A manual cutter for all kinds of natural slate and fibre-cement up to a thickness of 1/4", fitted with a punching device, one-hand cutting and punching, ergonomical, changing blades not necessary



QR-code page 50

with punch	00920000	1.4 lb	11 ¾"	1
------------	----------	--------	-------	---



151 / ERGO-CUT SLATE CUTTER, NATURAL SLATE AND FIBRE-CEMENT

A manual cutter for all kinds of natural slate and fibre-cement up to a thickness of 1/4", ergonomically formed for an easy and fatigue-proof working, changing blades not necessary



without punch	00910000	1 lb	11 ¾"	1
---------------	----------	------	-------	---





What do you have to do differently?

Hold it the right way round!

Work as carefully as you always have done. The new construction helps you to be as efficient like no other slate cutter before.

*When cutting fiber cement, the **MasterCut®** should be held with the hole punch and centimeter scale facing upwards, the breaking edge is formed below and when cutting slate the **MasterCut®** is held the other way round so that the breaking edge is clearly visible.*

Our innovative tool lies both ways comfortably in the hand - and eases pressure on the wrist during daily work. Cutting is made therefore significantly easier and the end result much more precise. The design is as strong as the quality.

Exactly what to expect from an expert!

152 / **MASTERCUT[®]**

EVERYTHING AT A GLANCE:

The innovative design enables an unobstructed view of the cutting length.

EVERYTHING UNDER CONTROL:

The brand new construction ensures easier cutting than ever before.

ALL IN ONE:

The optimised blade and the punch with a robust, non-breakable spring save time and energy.

SAFE AND SOUND:

The new finger and hand protection makes sure that fingers can not be pinched at any time - guaranteed.

EVERYTHING WITH EASE:

The superb ergonomics allow an optimal cutting angle and the comfortable soft handles alleviate work considerably.

EVERYTHING WITH SIMPLICITY:

The **MasterCut[®]** consists of but a few parts - making cleaning and maintenance easy. All spare parts can be reached by loosening 3 screws.

EVERYTHING FROM ONE CAST:

The slate cutter is manufactured out of one aluminium die-casted mould of highest material consistency and quality.

EVERYTHING FOR SUCCESS:

The **MasterCut[®]** is just like you: determined, confident and success orientated. It is an extension of your arm when working on the roof. A master of masters. It will accompany you every day and for many years.



slate



fiber cement

TAKE A LOOK AT OUR FLYER.
THE NEW SLATE CUTTER.
MASTERCUT[®]



Product information



QR-code page 50

#			
00950000	27.5 oz	13"	1



153 SLATE CUTTER SCHIEFERMAX - HEAVY DUTY

Suits all roof and facing tiles made of slate, artificial slate and fibre cement, body made of high-quality aluminium alloy, weight only 15.2 lb, hardened knife, especially suitable for hard and brittle slate tiles up to 3/8", delivery only basic tool (without punching device and guide)



QR-code page 51

basic tool	00350000	15.2 lb	17 3/4"	1
------------	----------	---------	---------	---



154 GUIDE FOR SLATE CUTTER SCHIEFERMAX

Adjustable from 1 1/8" - 12", 0 - 90°



QR-code page 50

	00351000	2.2 lb	16 7/8"	1
--	----------	--------	---------	---



155 PUNCHING DEVICE FOR SLATE CUTTER SCHIEFERMAX

A normal steel nail, 1/8" x 1 5/8", is used to punch holes



QR-code page 51

	00352000	2 lb	17 3/8"	1
--	----------	------	---------	---



156 SLATE RIPPER

The traditional FREUND slate ripper, hand forged, all out of one piece of steel, with nail claw on the handle



QR-code page 51

	00240470	1.6 lb	18 1/2"	1
	00240525	1.7 lb	20 5/8"	1
	00240600	1.8 lb	23 3/8"	1



157 / SLATE RIPPER WITH STAINLESS STEEL BLADE, STRAIGHT HANDLE

Heavy handle, ultra flexible 15 gauge interchangeable steel blade with rounded edges is secured with special screws, special holder is suitable for all lengths of blades, delivery contents include an assembly wrench for changing blades



2 symmetrical nail puller	00254470	2.2 lb	18 1/2"	1
2 symmetrical nail puller	00254525	2.2 lb	20 5/8"	1
2 symmetrical nail puller	00254600	2.4 lb	24"	1

158 / REPLACEMENT BLADE FOR SLATE RIPPER

Extra thin, 15 gauge ultra flexible blade, stainless steel, with screws

4 symmetrical nail puller	00253470	0.6 lb	18 1/2"	1
4 symmetrical nail puller	00253525	0.6 lb	20 5/8"	1
4 symmetrical nail puller	00253600	0.7 lb	24"	1



155 / SPECIAL SUPPORT FOR SLATE RIPPER

Heavy handle, screws and socket



	00250002	1.7 lb	8 5/8"	1
--	----------	--------	--------	---

156 / ROOFER'S HAMMER

Steel tube handle with PVC grip and magnetic nail holder, polished finish, DIN 7239



grey handle	00110698	21.1 oz	12 5/8"	1
-------------	----------	---------	---------	---

157 / ROOFER'S HAMMER

One piece forged steel, bi-component handle, with magnet



QR-code page 51

ultra-light	00114002	17.6 oz	12 5/8"	1
-------------	----------	---------	---------	---

158 / ROOFER'S HAMMER

Full metal, hammer head, DIN 7239



with leather handle and magnet	00114000	24.7 oz	12 5/8"	1
--------------------------------	----------	---------	---------	---

A   
Angle Flat Scraper - Item-no. 01120000
<http://www.freund-cie.com/werkzeugeanwendung/klempner/videos/eckschaleisen>

  
Flitz-Folder - Item-no. 01131000
<http://www.freund-cie.com/werkzeugeanwendung/klempner/videos/flitz-faltenzieher>

B   
Broad Clenching Pliers - Item-no. 01080101
<http://www.freund-cie.com/werkzeugeanwendung/klempner/videos/breitfalzzange-01080101>

  
FREUND Disk Roller - Item-no. 91611000
<http://www.freund-cie.com/werkzeugeanwendung/klempner/videos/freund-teller-kanter-doppelt>

C   
Clenching Pliers - Item-no. 01090040
http://www.freund-cie.com/werkzeugeanwendung/klempner/videos/falzzange_gebogen

  
FREUND Disk Roller Double - Item-no. 91610000
<http://www.freund-cie.com/werkzeugeanwendung/klempner/videos/freund-teller-kanter-doppelt>

  
Clipping Shears System - Item-no. 91190000
<http://www.freund-cie.com/werkzeugeanwendung/klempner/videos/ausklinkwerkzeug-91190000/>

  
FREUND Standard Edge Roller - Item-no. 91602000
<http://www.freund-cie.com/werkzeugeanwendung/klempner/videos/freund-standard-kanter>




  
Corner Clenching Pliers - Item-no. 01170060
http://www.freund-cie.com/werkzeugeanwendung/klempner/videos/eck_falzzange

  
FREUND Standard Edge Roller Double - item-no. 91620000
<http://www.freund-cie.com/werkzeugeanwendung/klempner/videos/freund-standard-kanter-doppelt>

D   
Double Welt Iron - Item-no. 01110000
<http://www.freund-cie.com/werkzeugeanwendung/klempner/videos/doppelfalzeisen>

  
FREUND Premium Edge Roller - Item-no. 91600000
<http://www.freund-cie.com/werkzeugeanwendung/klempner/videos/freund-premium-kanter>

E   
Eaves Closing Edger - Item-no. 91080000
<http://www.freund-cie.com/werkzeugeanwendung/klempner/videos/traufenschliesser>

  
Flux for Tin Solder - Item-no. 66400320
<http://www.freund-cie.com/werkzeugeanwendung/klempner/videos/loetgel>

  
Eaves Edger - Item-no. 91070000
<http://www.freund-cie.com/werkzeugeanwendung/klempner/videos/traufenkanter>

G   
Genuine Aviation Snips - Item-no. 01282240
<http://www.freund-cie.com/werkzeugeanwendung/klempner/videos/figureschere-gerade/>

  
Eaves Ruler - Item-no. 91230000
<http://www.freund-cie.com/werkzeugeanwendung/klempner/videos/traufenlineal>

  
Guide for Slate Cutter Schiefermax - Item-no. 00351000
http://www.freund-cie.com/werkzeugeanwendung/dachdeckerzimmerer/videos/winklanschlag_schiefermax

  
Ergo-Cut Slate Cutter - Item-no. 00920000
<http://www.freund-cie.com/werkzeugeanwendung/dachdeckerzimmerer/videos/schieferhaubuecke>

  
Gutter Hanger Bender - Item-no. 01000600
http://www.freund-cie.com/werkzeugeanwendung/klempner/videos/rinneisen_abbiegezange

  
Expander for Pipes - Item-no. 01320076
<http://www.freund-cie.com/werkzeugeanwendung/klempner/videos/rohraufweitgeraet>

H   
Hand Notcher - Item-no. 00371000
<http://www.freund-cie.com/werkzeugeanwendung/klempner/videos/ausklinschere>

F   
Flat Nose Pliers - Item-no. 01370240
<http://www.freund-cie.com/werkzeugeanwendung/klempner/videos/freund-premium-kanter>

M   
MasterCut® - Item-no. 00950000
<http://www.freund-cie.com/index.php?id=65&asset=505>

N   



Notch Punching Machine - Item-no. 00360020
<http://www.freund-cie.com/werkzeugeanwendung/klempner/videos/lochzange-00360020>

Seam Opening Pliers - Item-no. 01070250
<http://www.freund-cie.com/werkzeugeanwendung/klempner/videos/falzaufbiegezange>

O   

Offset Cutting Snips - Item-no. 01290240
http://www.freund-cie.com/werkzeugeanwendung/klempner/videos/idealschere_01290240

 **Shape and Straight Cutting Snips - Item-no. 01292260**
<http://www.freund-cie.com/index.php?id=162> 

Offset Cutting Snips - Item-no. 01295260
http://www.freund-cie.com/werkzeugeanwendung/klempner/videos/idealschere_01295260/

Shape and Straight Cutting Snips - Item-no. 01294260
<http://www.freund-cie.com/werkzeugeanwendung/klempner/videos/idealschere-01294260>

Offset Cutting Snips - Item-no. 01293260
http://www.freund-cie.com/werkzeugeanwendung/klempner/videos/idealschere_01293260

Sheetbending Jaw - Item-no. 91040000
<http://www.freund-cie.com/werkzeugeanwendung/klempner/videos/idealschere-01293260>

Offset Cutting Snips Mini - Item-no. 01290180
<http://www.freund-cie.com/werkzeugeanwendung/klempner/videos/idealschere-mini>

Slater's Anvil Bent - Item-no. 00311000
<http://www.freund-cie.com/werkzeugeanwendung/klempner/videos/freund-standard-kanter-doppelt>

P   


Punching Device - Item-no. 00352000
http://www.freund-cie.com/werkzeugeanwendung/dachdeckerzimmerer/videos/lochvorrichtung_schiefermax




Slater's Anvil Straight - Item-no. 00310000
http://www.freund-cie.com/werkzeugeanwendung/dachdeckerzimmerer/videos/schieferhaubrucke_00310000

Punching Machine - Item-no. 00360010
<http://www.freund-cie.com/werkzeugeanwendung/klempner/videos/lochzange-00360010>

Slate Cutter Schiefermax - Item-no. 00350000
http://www.freund-cie.com/werkzeugeanwendung/dachdeckerzimmerer/videos/schiefermax_schiefermax

PVC Hammer - Item-no. 01678145
http://www.freund-cie.com/werkzeugeanwendung/klempner/videos/kunststoffhammer_kantig

Slater's Hammer Universo[®] - Item-no. 00020651
http://www.freund-cie.com/werkzeugeanwendung/dachdeckerzimmerer/videos/schieferhammer_universo

R   

Roofer's Hammer - Item-no. 00114002
http://www.freund-cie.com/werkzeugeanwendung/dachdeckerzimmerer/videos/tatthammer_00114002

Slater's Ornament Hammer Universo[®] - Item-no. 00074000
http://www.freund-cie.com/werkzeugeanwendung/dachdeckerzimmerer/videos/schieferhammer_universo_ornament

Round Nose Pliers - Item-no. 01360240
<http://www.freund-cie.com/werkzeugeanwendung/klempner/videos/rundzange>



Slate Ripper - Item-no. 00240470
http://www.freund-cie.com/werkzeugeanwendung/dachdeckerzimmerer/videos/hageleisen_00240400

S   

Scriber - Item-no. 01133000
<http://www.freund-cie.com/werkzeugeanwendung/klempner/videos/anreisschablone-01132000>

Small Clinching Pliers - Item-no. 01080022
http://www.freund-cie.com/werkzeugeanwendung/klempner/videos/mini_falzzange_gerade

Seaming Tongs - Item-no. 01141120
<http://www.freund-cie.com/werkzeugeanwendung/klempner/videos/deckzange>

Small Clinching Pliers - Item-no. 01090022
http://www.freund-cie.com/werkzeugeanwendung/klempner/videos/mini_falzzange_gebogen



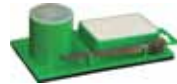
Soldering Iron - item-no. 66434000
<http://www.freund-cie.com/werkzeugeanwendung/klempner/videos/loetkolben>



Soldering Iron Set in a Metal Box - Item-no. 66440000
<http://www.freund-cie.com/index.php?id=66&asset=207>



Soldering Set Löt Max - Item-no. 03310000
<http://www.freund-cie.com/werkzeugeanwendung/klempner/videos/loetmax>



Squeezing Folding Plier - Item-no. 01130000
<http://www.freund-cie.com/werkzeugeanwendung/klempner/videos/quetschfalzeisen>



Square Seam Folder - Item-no. 91100000
<http://www.freund-cie.com/werkzeugeanwendung/klempner/videos/winkelfalzschliesser>



Square Seam Folder - Item-no. 91101000
http://www.freund-cie.com/werkzeugeanwendung/klempner/videos/winkelfalzschliesser_stehend



Tile Edger - Item-no. 91160000
http://www.freund-cie.com/werkzeugeanwendung/klempner/videos/pfannen_eckkanter



Tinedge Jaws - Item-no. 91010000
<http://www.freund-cie.com/werkzeugeanwendung/klempner/videos/blechkantenzange>



Tinman's Hammer - Item-no. 01674000
http://www.freund-cie.com/werkzeugeanwendung/klempner/videos/kunststoffhammer_mit_finne



Twin Square Seam Folder - Item-no. 91170000
<http://www.freund-cie.com/werkzeugeanwendung/klempner/videos/winkeldoppelfalzer>



Twin Square Seam Solder - Item-no. 91171000
http://www.freund-cie.com/werkzeugeanwendung/klempner/videos/winkeldoppelfalzer_stehend



Wooden Hammer - Item-no. 01676000
<http://www.freund-cie.com/werkzeugeanwendung/klempner/videos/holzhammer>



T



MAKE YOUR TOOL *A FRIEND*

 **QUALITY TOOLS**

 **PROFESSIONAL SERVICE**

 **VARIETY DELIVERY PROGRAM**

A		M	
ADAPTER FOR FREUND EDGE ROLLER	10	MASTERCUT®	47
ADAPTER USA	34	N	
AMMONIA STONE FOR SOLDERING	38	NOTCH-PUNCHING MACHINE	24
ANGLE FLAT SCRAPER	26	O	
AUTOMATIC SOLDERING IRON WITH GAS CARTRIDGE	30	OFFSET CUTTING SNIPS	22-23
B		P	
BOSSING MALLET	28	PERKEO KIT USA	29
BOTTLE FOR HYDROCHLORIC ACID/SOLDERING FLUID	38	PIPE CRIMPER	38
BOTTOM-SWAGE	28	POLISHING HAMMER	26
BROAD CLINCHING PLIERS	12	PREMIUM SOLDERING KIT	29
C		PUNCHING DEVICE FOR SLATE CUTTER	48
CAP FOR SCREEN HEAD	35	PUNCHING MACHINE	24
CHASE WEDGE	28	PUNCH SNIPS	20
CLINCHING PLIERS	11-12	PUNCH SNIPS WITH CURVED BLADES	20
CLIPPING SHEARS SYSTEM 133 AKW	18	PVC HAMMER	27
COMBINATION CUTTING SNIPS	21	R	
CORNER CLINCHING PLIERS	13	REPLACEMENT BLADE FOR SLATE RIPPER	49
CRIMPER / FOLDING TONGS 114 FD	18	ROOFER'S HAMMER	49
D		ROUNDED CLINCHING PLIERS	13
DEAD BLOW SOFT FACED HAMMER	27	ROUND NOSE PLIERS	14
DOUBLE WELT IRON	25	S	
E		SCREEN HEAD	36
EAVES CLOSING JAW 106 TSCA	16	SCRIBER/SCRATCH/MARKING TOOL	24
EAVES EDGER	16	SEAMING TONGS	14-15
EAVES RULER	16	SEAM OPENING PLIERS	13
ERGO-CUT SLATE CUTTER	45	SEMICIRCULAR DORMER SQUARESEAM FOLDER	16
EXPANDER FOR PIPES	38	SHAPE AND STRAIGHT CUTTING SNIPS	22
F		SHEETBENDING-JAW	17
FLAT NOSE PLIERS	13	SINGLE-HANDED-EDGER	18
FLAT SCRAPER	25	SLATE CUTTER SCHIEFERMAX - HEAVY DUTY	48
FLIZ-FOLDER	25	SLATE RIPPER	48-49
FLUX FOR TIN-SOLDER	37	SLATE RIPPER WITH STAINLESS STEEL BLADE, STRAIGHT HANDLE	49
FREUND DISC ROLLER	8, 10	SLATER'S ANVIL	45
FREUND DISK ROLLER	8	SLATER'S HAMMER, AMERICAN DESIGN	44
FREUND MAXI EDGE ROLLER	9	SLATER'S HAMMER, CANADIAN DESIGN	44
FREUND MAXI EDGE ROLLER DOUBLE	9	SLATER'S HAMMER, FRENCH DESIGN	44
FREUND PERFECT BENDER	10	SLATER'S ORNAMENT HAMMER UNIVERSO®	44
FREUND PREMIUM EDGE ROLLER	9	SMALL CLINCHING PLIERS	11
FREUND PREMIUM EDGE ROLLER DOUBLE	10	SOLDERING FLUID BRUSH	37
FREUND RADIUS ROLLER	8	SOLDERING IRON SET	29
FREUND STANDARD EDGE ROLLER	8	SOLDERING IRON TIP	32, 34
FREUND STANDARD EDGE ROLLER DOUBLE	9	SOLDERING IRON TIP BENT	32
FREUND-TOGGLE JOINT HAND RIVETER	39	SOLDERING IRON TIP, COATED	33
G		SOLDERING IRON TIP, LONGLIFE	33
GAS LIGHTER	36	SOLDERING IRON TIP TURBO	32
GENUINE AVIATION SNIPS	21-22	SOLDERING IRON TIP, ZINNLUX	34
GROOVING HAMMER	26	SOLDERING IRON WITH CERCO-BURNER	30
GUIDE FOR SLATE CUTTER	48	SOLDERING IRON WITH PATENTED CERCO-BURNER	30
GUTTER HANGER BENDER	38	SOLDERING SET LÖT MAX	37
H		SOLDERING SET LÖT MAX COMBI	37
HAMMER FOR ANGLE FLAT SCRAPER	26	SPARE ORIFICE	36
HAND CUTTING SYSTEM HSG	18	SPECIAL SUPPORT FOR SLATE RIPPER	49
HAND GRIP FOR FREUND EDGE ROLLER	10	SPINDLE WHEEL	36
HAND NOTCHER	24	SQUARE SEAM FOLDER 111 WFSCH	15
HIGH PERFORMANCE PROPANE SOLDERING IRON	30	SQUARE SEAM FOLDER, UPRIGHT 128 WFSCHST	15
HIGH PERFORMANCE SPARE GAS CARTRIDGE POWER GAS	30	SQUEEZING FOLDING PLIER	25
HIGH PRESSURE HOSE	34	STAND	35
HIGH PRESSURE REGULATOR	35	STANDARD SOLDERING KIT	29
HOSE COUPLING	35	T	
L		TILE EDGER PEK	17
LOCKSMITH'S HAMMER	26	TILE EDGER, SMALL 116 PEK	17
		TINEDGE-JAWS 104 BKZ	17
		TINMAN'S HAMMER	27-28
		TINMAN'S HAMMER, PVC	27
		TINMEN'S/PELIKAN SNIPS	20



ADMINISTRATION AND PRODUCTION

P.F. FREUND & CIE. GmbH · Hahnerberger Strasse 94-96 · D-42349 Wuppertal

Phone +49 (0)2 02/4 09 29-0 · Fax +49 (0)2 02/4 09 29-29

mail@freund-cie.com · www.freund-cie.com



American Master Gutters, Inc.

4333 W. 71st Street

Indianapolis, IN 46268

P: 317.328.5293

Fax: 317.328.5609

americanmastergutters@gmail.com

www.americanmastergutters.com

www.freund-tools.com