



the metal pages

The Metal Pages

The Metal Pages is a comprehensive guide to a range of materials which we truly believe reflects the diversity of today's metal roofing industry.



Contents

4 - Lead

12 - Zinc

18 - Copper

28 - Steel

31 - Coated Aluminium

35 - Rainwater Systems

42 - Fabrications

46 - Ancillary Products

55 - Training

lead







The future of truly sustainable low carbon Roofing & Façade.

Lead sheet as a material for flashing, roofing and cladding has been at the heart of UK construction for centuries. When fitted in accordance with recognised guidelines its malleability and durability make it the ideal material for the most complicated of details in the most extreme conditions. Lead enjoys an enviable record in terms of recycling and embodied energy, so much so, that it has a BRE Green Guide A+ rating. Even so, in terms of the route to market for rolled lead sheet the existence of a British Standard, BS EN 12588, means that supply and procurement has traditionally been commodity driven. However, while the Standard provides a defined measure of quality, it doesn't differentiate between the source of raw materials or proportion of recycled material used.

With the high demand for products in construction, which demonstrates high sustainability, Envirowales have taken the unprecedented step of marketing the 'Envirolead' brand as a specifiable product. It carries all of the benefits of standard rolled lead and is manufactured no differently but, critically, it has an unprecedented chain of custody and no reliance on ore extraction. This gives architects an opportunity for the first time to capitalise on the one of the most efficient forms of recycling while guaranteeing that the product chosen has the lowest possible environmental impact.

Recycling everyday Batteries

5% Polypropylene

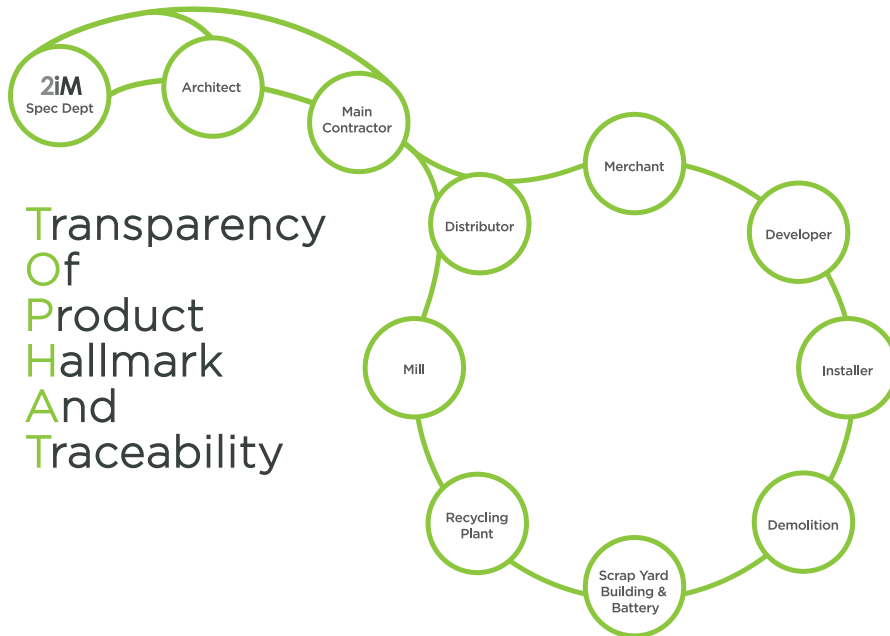
12% Sulphuric Acid

50% Desulphurised Paste

29% Metallic Lead

96% Recycled





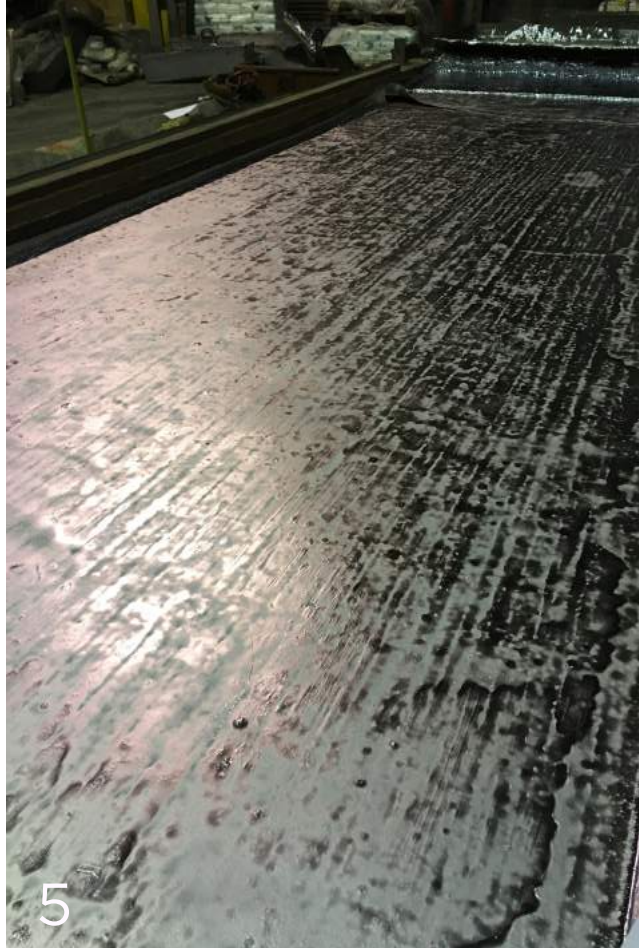
Book your CPD today

RIBA Approved, Core Curriculum CPD presentation on the recycling and use of Sheet and Cast Lead. For more information contact

sales@leadesales.co.uk

01992 444100

Sand Cast Lead



Sand cast lead is produced by pouring molten lead onto a bed of moulding sand; this process has been used for hundreds of years. Skilled operatives will then use a strickle to chase the lead to the desired thickness. Once it has solidified, it is then cut to width and length then rolled. Sand cast lead is available in standard codes of 6, 7 & 8 (other codes are available) and because it is produced to the specific sizes required, there is nominal waste.

Rolled (Milled) Lead Sheet

BSEN 12588:2006

Lead sheet has been produced by rolling since the mid 1700's and by the turn of this Century, rolled (milled) Lead sheet was being used in the UK as an alternative to sand cast sheet for roofing and weathering.

Rolled Lead sheet is formed by passing a slab of refined lead back and forth on a rolling mill between closing rollers, which is computer controlled to obtain an exact predetermined thickness.

The sheet is then slit to width and cut to length for final packing and distribution. BSEN 12588:2006 specifies thickness tolerances and chemical composition in order to produce a consistent microstructure.

The minimal variance in thickness means that when Lead sheet is fitted to a roof, the extent of thermal movement can be accurately predicted and the correct fixing method adopted.

Such is the consistency of the process that rolled sheet will not vary in thickness by more than +/- 5% at any given point.



Further to manufacturing the leading brand of rolled lead for the building industry, within the 2iM Group we also manufacture Specialist Lead Products for industries such as Medical, Nuclear, Mining and Chemical. Furthermore we manufacture products for ballast and acoustic applications and we are capable of providing totally bespoke requirements upon detailed request.

The source of lead for our specialist products is from the same totally recycled source with the same unique chain of custody. The difference being that products such as these are always formed and finished by using either a casting, machine or extruding process. Due to the process of manufacture, the lead used cannot be called BS EN 12588. This relates to milled lead only for the roofing industry.



Medical



Nuclear



**Radiation
Shielding**



Ballast



Chemical



Building



Acoustic



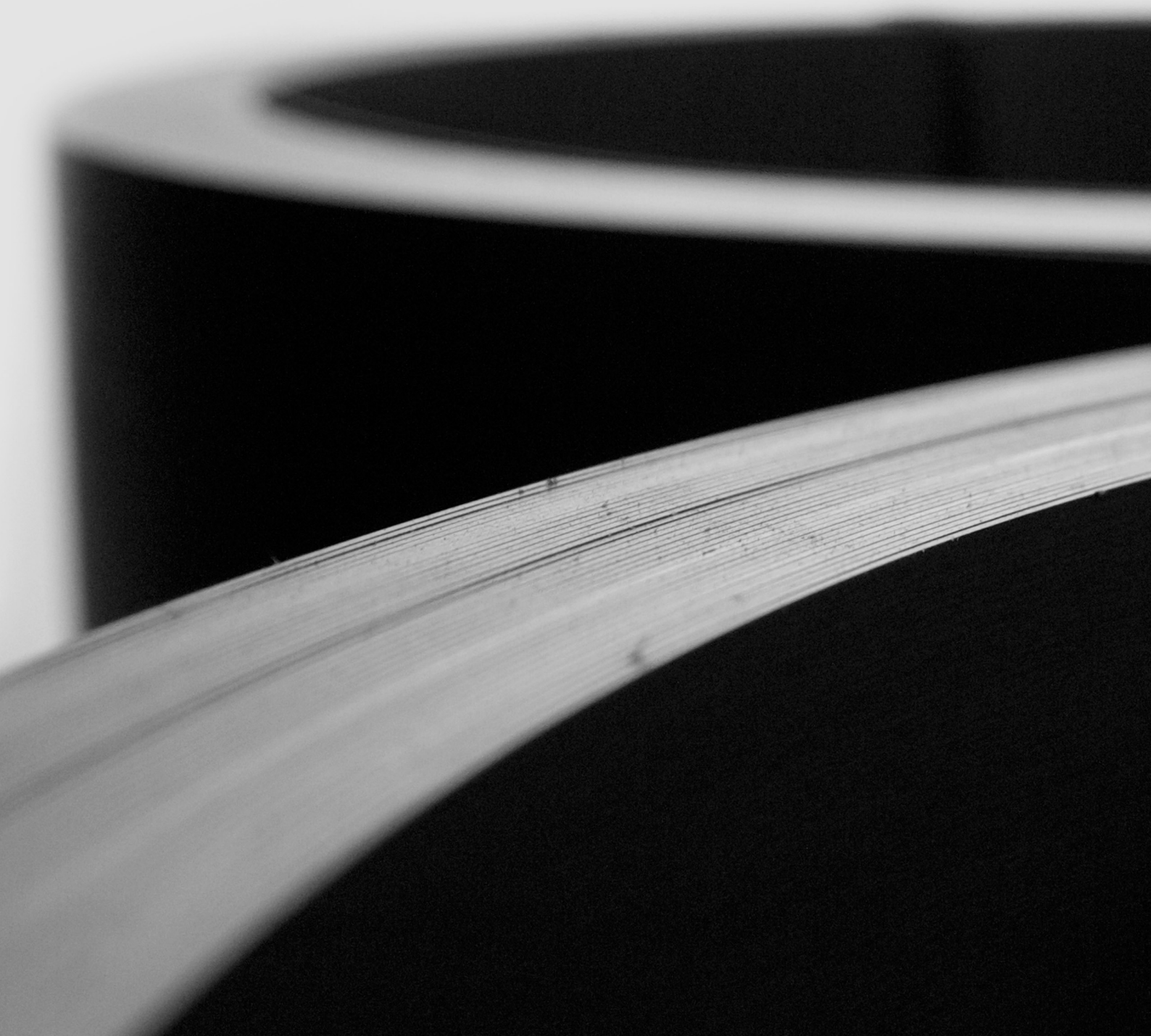
Anodes

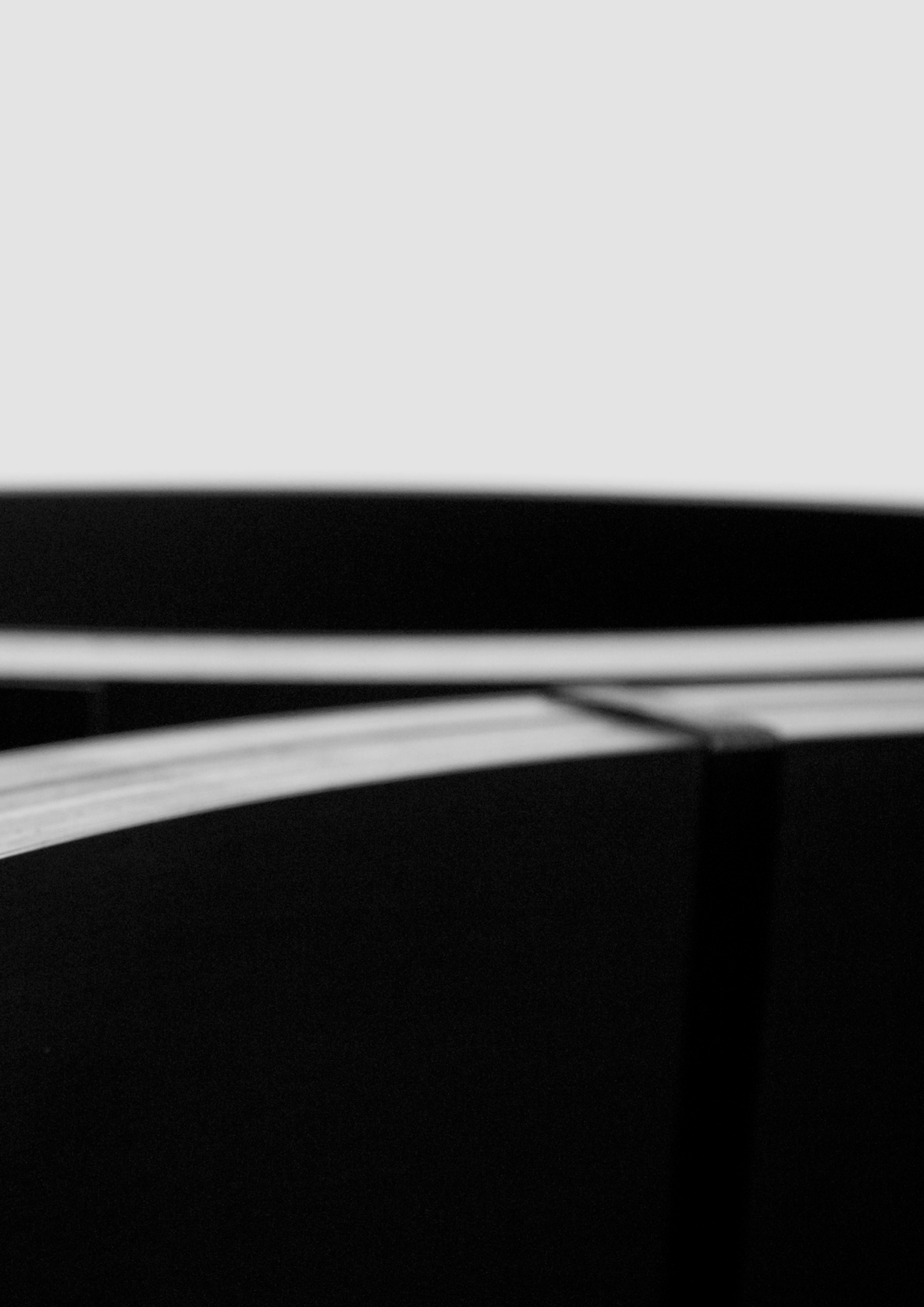
Lead Theoretical Weights Chart / Kg

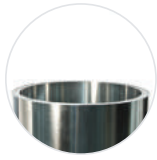
Width (mm)	Nearest Imperial (inch)	Code 3		Code 4		Code 5		Code 6		Code 7		Code 8	
		3m	6m	3m	6m	3m	6m	3m	6m	3m	6m	3m	6m
150	6	7	13	9	18	11	23	14	27	16	32	18	36
180	7	8	16	11	22	14	27	16	32	19	39	22	43
210	8	9	19	13	26	16	32	19	38	23	45	25	51
240	9	11	22	15	29	18	37	22	43	26	51	29	58
300	12	13	27	18	37	23	46	27	54	32	64	36	72
360	14	16	32	22	44	27	55	32	65	39	77	43	87
390	15	18	35	24	48	30	59	35	70	42	84	47	94
450	18	20	40	28	55	34	69	41	81	48	96	54	109
510	20	23	46	31	62	39	78	46	92	55	109	62	123
600	24	27	54	37	73	46	91	54	108	64	129	72	145
760	30	34	68	47	93	58	116	69	137	81	163	92	184
800	32	36	72	49	98	61	122	72	144	86	171	97	193
850	34	38	76	52	104	65	130	77	153	91	182	103	205
914	36	41	82	56	112	70	139	82	165	98	196	110	221
1000	39	45	90	61	122	76	152	90	180	107	214	121	242
1200	48	54	108	73	147	91	183	108	216	129	257	145	290
1600	63	72	144	98	196	122	244	144	288	171	343	193	386
2400	96	-	-	147	294	183	366	216	433	257	514	290	580
Thickness (mm)		1.32		1.80		2.24		2.65		3.15		3.55	
Kg/m ²		14.97		20.41		25.40		30.05		35.72		40.26	



zinc







VMZINC

All available with *PLUS Backing & *Stratt

Width	Thickness	Weight	Linear Length (M)
mm	mm	per M2	Based on 100Kg
Coils			
400	0.7	5.04	49
410	0.7	5.04	48
430	0.7	5.04	46
500	0.7	5.04	39
525	0.7	5.04	34
570	0.7	5.04	34
600	0.7	5.04	33
670	0.7	5.04	29
750	0.7	5.04	26
1000	0.7	5.04	19
400	0.8	5.76	43
410	0.8	5.76	42
430	0.8	5.76	40
500	0.8	5.76	34
525	0.8	5.76	30
570	0.8	5.76	30
600	0.8	5.76	28
670	0.8	5.76	25
750	0.8	5.76	23
1000	0.8	5.76	17
400	1	7.20	34
410	1	7.20	33
430	1	7.20	32
500	1	7.20	27
525	1	7.20	24
570	1	7.20	24
600	1	7.20	23
670	1	7.20	20
750	1	7.20	18
1000	1	7.20	13

Width	Thickness	Weight
mm	mm	(Kg) per sheet
Sheets		
1000 x 2000	0.7	10.08
1000 x 3000	0.7	15.12
1000 x 2000	0.8	11.52
1000 x 3000	0.8	17.28
1000 x 2000	1.00	14.40
1000 x 3000	1.00	21.60



Natural



Quartz



Anthra



Pigmento



Azengar

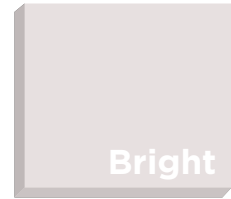
Please note that the colors on this brochure are for reference only





RHEINZINK®

Width	Thickness	Weight	Linear Length (M)
mm	mm	per M2	Based on 100Kg
Coils			
400	0.7	5.04	74
410	0.7	5.04	73
430	0.7	5.04	69
500	0.7	5.04	60
575	0.7	5.04	52
600	0.7	5.04	50
675	0.7	5.04	44
1000	0.7	5.04	30
400	0.8	5.76	65
410	0.8	5.76	64
430	0.8	5.76	61
500	0.8	5.76	52
575	0.8	5.76	45
600	0.8	5.76	43
675	0.8	5.76	39
1000	0.8	5.76	26
400	1	7.20	52
410	1	7.20	51
430	1	7.20	48
500	1	7.20	42
575	1	7.20	36
600	1	7.20	35
675	1	7.20	31
1000	1	7.20	21



Bright



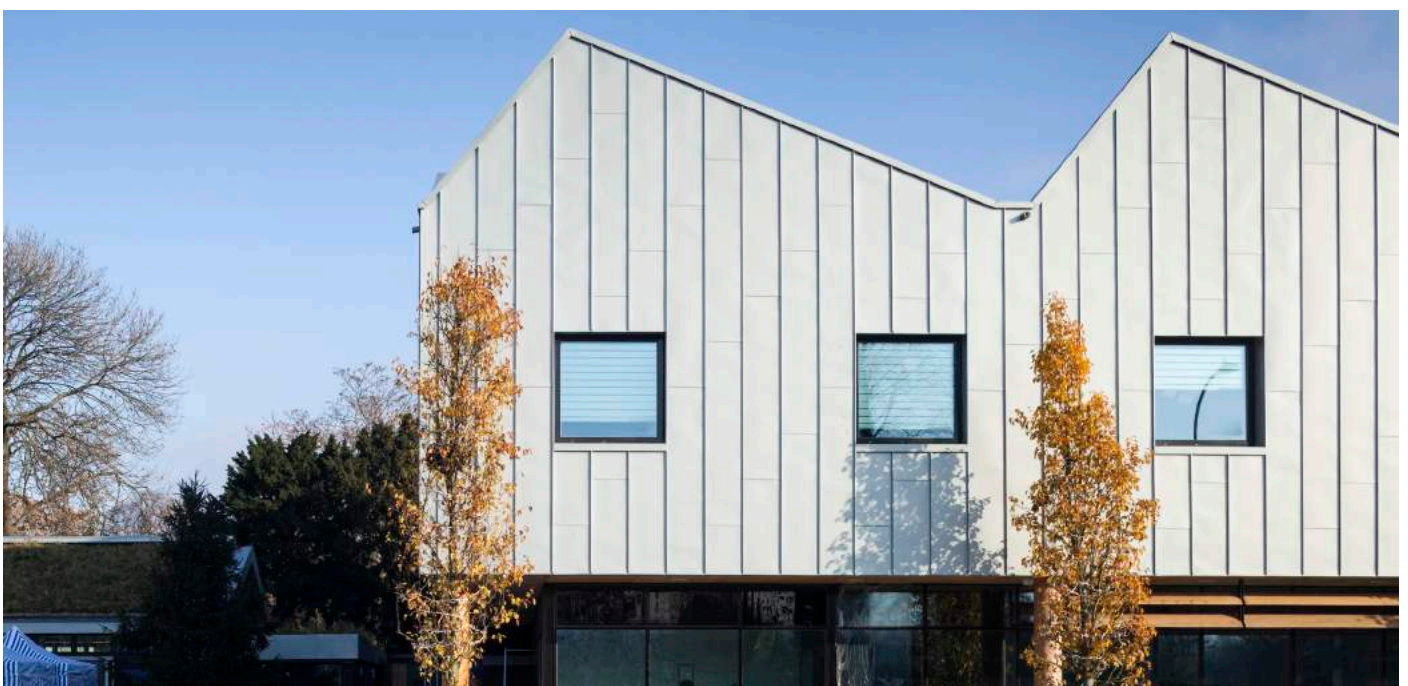
Blue Grey

**Patina range - Pro Roofing range
Protect range - Interieur range
Colour range



Graphite

**Protect Coating & Interieur range Only



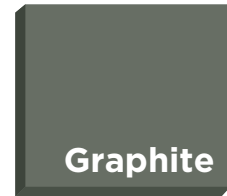


RHEINZINK®

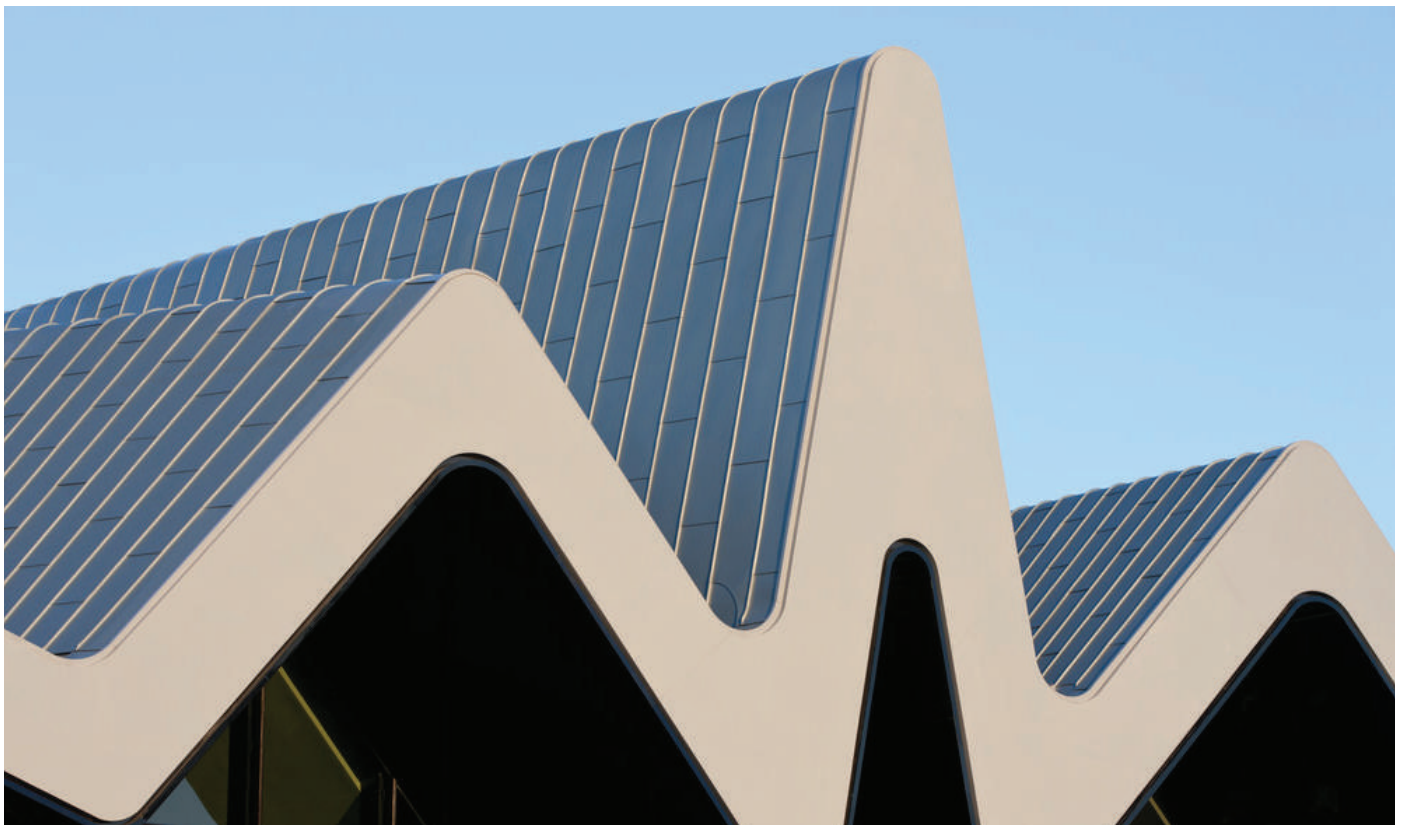
Width mm		Thickness mm	Weight (Kg) per sheet
Sheets			
1000 x 2000	-	0.70	10.08
1000 x 3000	-	0.70	15.12
1000 X 2000	AERO 46 Perf	-	-
1000 X 2000	AERO 63 Mesh	-	-
3000 X 250	UDS	-	-
3000 X 333	UDS	-	-
1000 x 2000	-	0.80	11.52
1000 x 3000	-	0.80	17.28
1000 X 2000	AERO 46 Perf	-	-
3000 X 250	UDS	-	-
3000 X 333	UDS	-	-
1000 x 2000	-	1	14.40
1000 x 3000	-	1	21.60
1000 X 2000	AERO 46 Perf	1	5.30
1000 X 2000	AERO 63 Mesh	1	7.78
3000 X 250	UDS	1	5.40
3000 X 333	UDS	1	7.20



**Patina range - Pro Roofing range
Protect range - Interieur range
Colour range



**Protect Coating & Interieur range Only

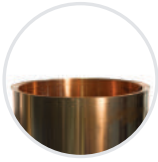


Please note that the colors on this brochure are for reference only



copper





KME

KME Copper - Classic

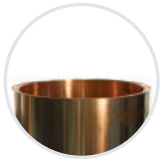
Width	Thickness	Weight	Linear Length
mm	mm	per M2	Per Coil (M)
Coils			
500	0.6	5.34	30
600	0.6	5.34	30
670	0.6	5.34	30
1000	0.6	5.34	24
500	0.7	6.23	30
600	0.7	6.23	30
670	0.7	6.23	30
1000	0.7	6.23	30
Flattened Mesh Available			



KME Copper - Classic Coated

Width	Thickness	Weight	Linear Length
mm	mm	per M2	Per Coil (M)
Coils			
670	0.6	5.34	Subject to quantity required
1000	0.6	5.34	Subject to quantity required
670	0.7	6.23	Subject to quantity required
1000	0.7	6.23	Subject to quantity required
670	1	8.90	Subject to quantity required
1000	1	8.90	Subject to quantity required





KME

KME Copper - Brass

Width	Thickness	Weight	Linear Length
mm	mm	per M2	Per Coil (M)
Coils			
670	0.7	5.95	30
1000	0.7	Subject to quantity required	
670	1	Subject to quantity required	
1000	1	Subject to quantity required	



KME Copper - Zinn

Width	Thickness	Weight	Linear Length
mm	mm	per M2	Per Coil (M)
Coils			
600	0.6	Subject to quantity required	
670	0.6	Subject to quantity required	
600	0.70	Subject to quantity required	
670	0.70	6.02	30



KME Copper - Gold

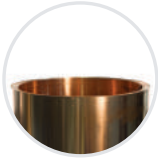
Width	Thickness	Weight	Linear Length
mm	mm	per M2	Per Coil (M)
Coils			
600	0.7	Subject to quantity required	
670	0.7	5.63	30
1000	0.7	Subject to quantity required	
600	1	Subject to quantity required	
670	1	8.04	-
1000	1	Subject to quantity required	



KME Copper - Patina

Width	Thickness	Weight	Linear Length
mm	mm	per M2	Per Sheets (M)
Sheets			
600	0.6	5.34	Subject to quantity required
670	0.6	5.34	Subject to quantity required
1000	0.6	5.34	Subject to quantity required
600	0.7	6.23	Subject to quantity required
670	0.7	6.23	Subject to quantity required
1000	0.7	6.23	Subject to quantity required
600	1	8.90	Subject to quantity required
670	1	8.90	Subject to quantity required
1000	1	8.90	Subject to quantity required





KME

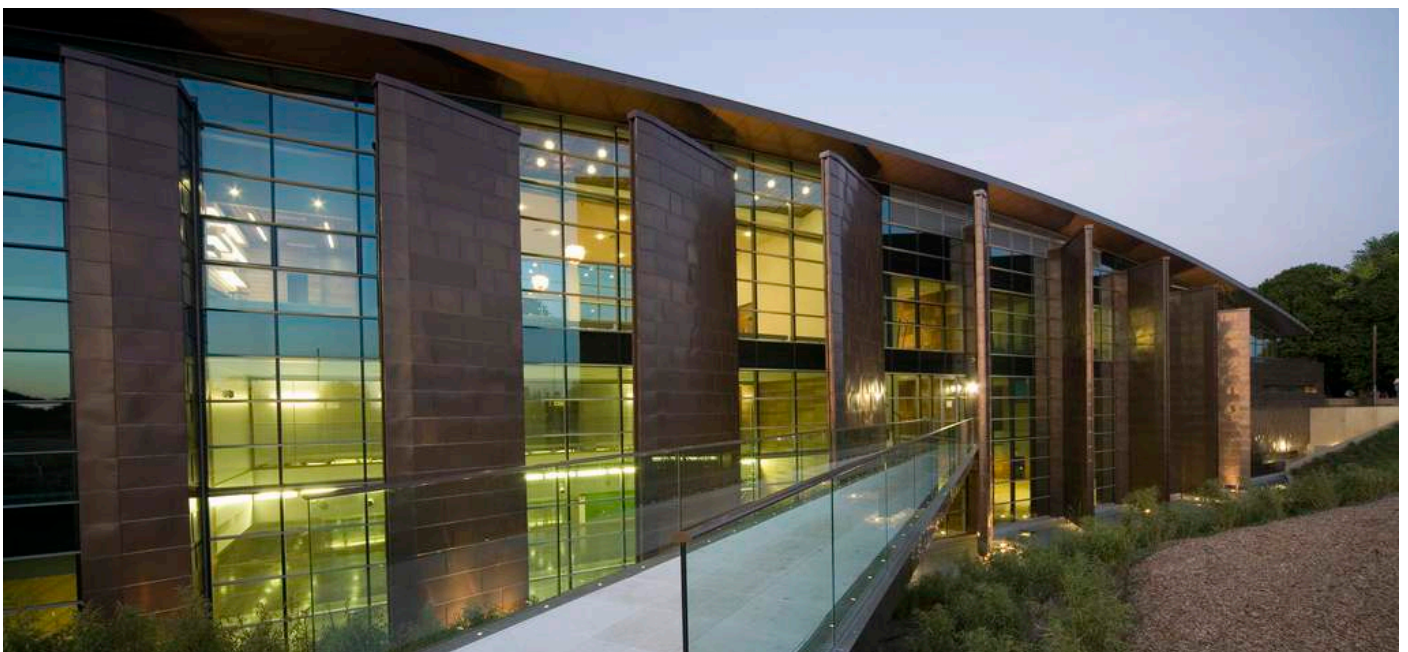
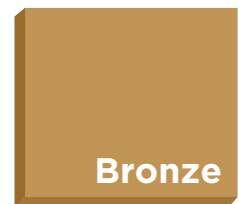
KME Copper - Oxid

Width	Thickness	Weight	Linear Length
mm	mm	per M2	Per Coil (M)
Coils			
500	0.6	5.34	30
600	0.6	5.34	30
670	0.6	5.34	30
1000	0.6	5.34	20
600	0.7	6.2	30
670	0.7	6.2	30
1000	0.7	6.2	20
500	1	8.90	TBA
600	1	8.90	TBA
670	1	8.90	TBA
1000	1	8.90	TBA



KME Copper - Bronze

Width	Thickness	Weight	Linear Length
mm	mm	per M2	Per Coil (M)
Coils			
600	0.7	6.18	30
670	0.7	6.18	30
670	SHEET - Subject to quantity required		
1000	SHEET - Subject to quantity required		
600	1	6.18	Subject to quantity required
670	1	6.18	Subject to quantity required
670	SHEET - Subject to quantity required		
1000	SHEET - Subject to quantity required		





Aurubis

Aurubis - Nordic Standard

Width	Thickness	Weight	Linear Length
mm	mm	per M2	Per Coil (M)
Coils			
500	0.6	5.34	30
600	0.6	5.34	30
670	0.6	5.34	30
1000	0.6	5.34	24
500	0.7	6.23	30
600	0.7	6.23	30
670	0.7	6.23	30
1000	0.7	6.23	20
500	1	8.94	30
600	1	8.94	30
670	1	8.94	30
1000	1	8.94	20

**Nordic
Standard**

Aurubis - Nordic Brown & Brown Light

Width	Thickness	Weight	Linear Length
mm	mm	per M2	Per Coil (M)
Coils			
500	0.6	5.34	30
600	0.6	5.34	30
670	0.6	5.34	30
1000	0.6	5.34	24
500	0.7	6.23	30
600	0.7	6.23	30
670	0.7	6.23	30
1000	0.7	6.23	20
500	1	8.94	30
600	1	8.94	30
670	1	8.94	30
1000	1	8.94	20

**Nordic
Brown**

**Brown
Light**



Aurubis

Aurubis - Nordic Blue

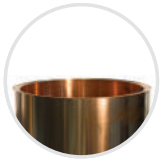
Width	Thickness	Weight	Linear Length
mm	mm	per M2	Per Coil (M)
Coils			
500	0.6	5.34	30
600	0.6	5.34	30
670	0.6	5.34	30
1000	0.6	5.34	20 - 24
500	0.7	6.23	30
600	0.7	6.23	30
670	0.7	6.23	30
1000	0.7	6.23	20 - 24
500	1	8.94	30
600	1	8.94	30
670	1	8.94	30
1000	1	8.94	20 - 24



Aurubis - Nordic Brass & Weathered

Width	Thickness	Weight	Linear Length
mm	mm	per M2	Per Coil (M)
Coils			
800	0.6	5.22	20 - 24
1000	0.6	5.22	20 - 24
800	0.7	6.12	20 - 24
1000	0.7	6.12	20 - 24
800	1	8.75	20 - 24
1000	1	8.75	20 - 24





Aurubis

Aurubis - Nordic Bronze

Width	Thickness	Weight	Linear Length
mm	mm	per M2	Per Coil (M)
Coils			
800	0.6	5.29	20 - 24
800	0.7	6.23	20 - 24
800	1	8.86	20 - 24



Aurubis - Nordic Royal

Width	Thickness	Weight	Linear Length
mm	mm	per M2	Per Coil (M)
Coils			
800	0.6	4.86	30
1000	0.6	4.86	20 - 24
800	0.7	5.67	30
1000	0.7	5.67	20 - 24
800	1	8.12	30
1000	1	8.12	20 - 24



Aurubis - Nordic Green

Width	Thickness	Weight	Linear Length
mm	mm	per M2	Per Coil (M)
Coils			
500	0.6	5.34	30
600	0.6	5.34	30
670	0.6	5.34	30
1000	0.6	5.34	20 - 24
500	0.7	6.23	30
600	0.7	6.23	30
670	0.7	6.23	30
1000	0.7	6.23	20 - 24
500	1	8.94	30
600	1	8.94	30
670	1	8.94	30
1000	1	8.94	20 - 24





steel





UGINOX
made for life

Uginox Patina K44

Width	Thickness	Weight	Linear Length (M)
mm	mm	per M2	Based on 100Kg
Coils			
580	0.5	4.00	43
1000	0.5	4.00	25
1160	0.5	4.00	21



Patina

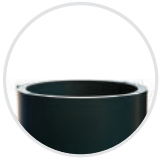
Uginox Top 316/1.4404

Width	Thickness	Weight	Linear Length (M)
mm	mm	per M2	Based on 100Kg
Coils			
580	0.5	4.00	43
1000	0.5	4.00	25
1250	0.5	4.00	21



Top





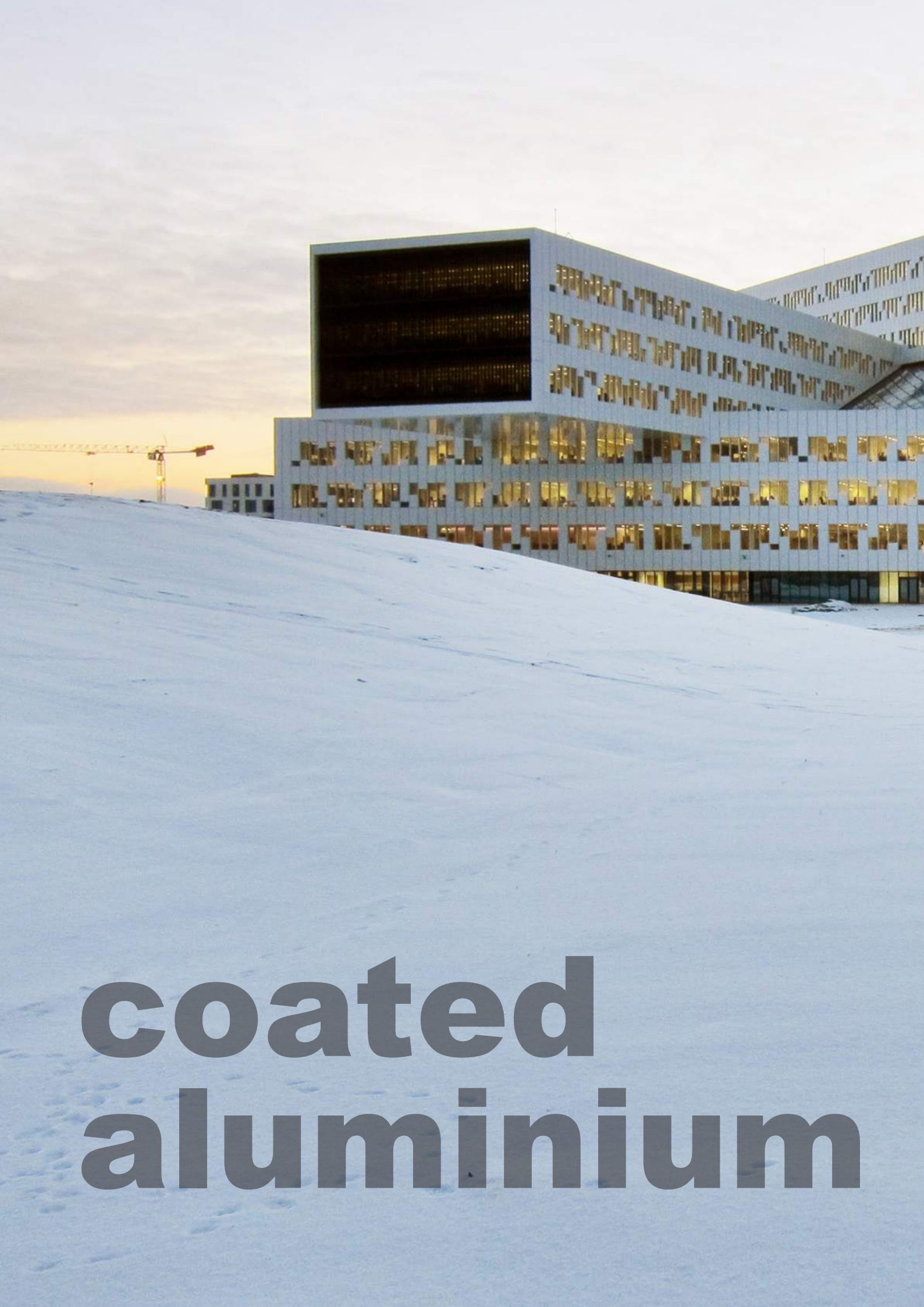
Greencoat PLX - Coloured Steel

Width	Thickness	Weight	Linear Length (M)
mm	mm	per M2	Based on 100Kg
Coils			
570	0.6	4.76	36
670	0.6	4.76	31

Wide range of finishes available. Please contact sales@almhm.co.uk for a list of all colours and finishes in the Greencoat range



Please note that the colors on this brochure are for reference only



**coated
aluminium**





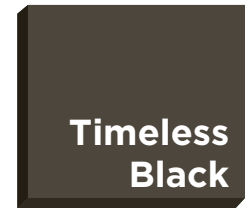
Alu-Fx - Timeless Grey

Width	Thickness	Weight	Linear Length (M)
mm	mm	per M2	Based on 100kg
Coils			
600	0.7	1.9	88



Alu-Fx - Timeless Black

Width	Thickness	Weight	Linear Length (M)
mm	mm	per M2	Based on 100kg
Coils			
600	0.7	1.9	88



Alu-Fx - Timeless Steel-Oxide

Width	Thickness	Weight	Linear Length (M)
mm	mm	per M2	Based on 100kg
Coils			
600	0.7	1.9	88



Alu-Fx - Timeless Bronze

Width	Thickness	Weight	Linear Length (M)
mm	mm	per M2	Based on 100kg
Coils			
600	0.7	1.9	88



Alu-Fx - Timeless Semi-Oxid

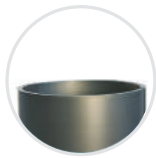
Width	Thickness	Weight	Linear Length (M)
mm	mm	per M2	Based on 100kg
Coils			
600	0.7	1.9	88



Alu-Fx - Timeless Copper

Width	Thickness	Weight	Linear Length (M)
mm	mm	per M2	Based on 100kg
Coils			
600	0.7	1.9	88

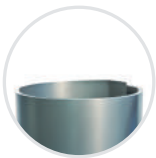
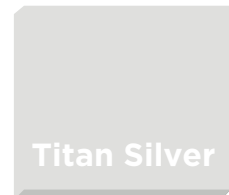




FalZinc®

Zinc Coated Aluminium - Finishes

Width	Thickness	Weight	Linear Length (M)
mm	mm	per M2	Based on 100kg
Coils			
600	0.7	1.9	88
670	0.7	1.9	78
Titan Silver - 600mm wide only			
600	1	2.7	55
670	1	2.7	62



FALZONAL®

Novelis prepainted aluminium in lock-welt quality

Pre-Painted Aluminium with wide colour range

Width	Thickness	Weight	Linear Length (M)
mm	mm	per M2	Based on 100kg
Coils			
600	0.7	1.9	88
1200	0.7	1.9	176

Wide range of finishes available. Please contact sales@almhm.co.uk for a list of all colours and finishes in the Falzonal range



Please note that the colors on this brochure are for reference only



rainwater systems





VM Zinc Systems - Natural

Gutter Size	Pipe Size
mm	mm
250	80
280	80
333	100
400	120



Round & Square Pipes Profile



Half Round & Box Gutter Profile



Natural

VM Zinc Systems - Quartz

Gutter Size	Pipe Size
mm	mm
250	80
280	80
333	100
400	120



Round & Square Pipes Profile



Half Round & Box Gutter Profile



Quartz

VM Zinc Systems - Anthra

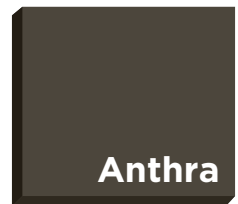
Gutter Size	Pipe Size
mm	mm
250	80
280	80
333	100
400	120



Round & Square Pipes Profile



Half Round & Box Gutter Profile



Anthra

VM Zinc Systems - Pigmento

Gutter Size	Pipe Size
mm	mm
250	80
280	80
333	100
400	120



Round Pipes Profile

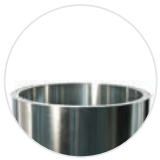


Half Round & Box Gutter Profile



Pigmento





RHEINZINK®

RheinZink - Bright

Gutter Size	Pipe Size
mm	mm
250	80
280	80
333	100
400	120



Round & Square Pipes Profile



Half Round & Box Gutter Profile



Bright

RheinZink - Blue Grey

Gutter Size	Pipe Size
mm	mm
250	80
280	80
333	100
400	120



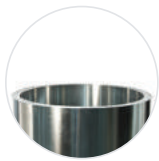
Round & Square Pipes Profile



Half Round & Box Gutter Profile



Blue Grey



UGINOX
made for life

Uginox - Patina

Gutter Size	Pipe Size
mm	mm
250	80
280	80
333	100
400	120



Round & Square Pipes Profile



Half Round & Box Gutter Profile



Patina

Uginox - Top

Gutter Size	Pipe Size
mm	mm
250	80
280	80
333	100
400	120



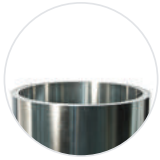
Round & Square Pipes Profile



Half Round & Box Gutter Profile



Top



ALM HM
A POSITIVE PARTNERSHIP

ALM HM - Natural Copper

Gutter Size	Pipe Size
mm	mm
250	80
280	80
333	100
400	120



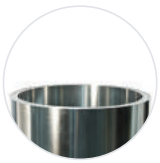
Round & Square Pipes Profile



Half Round & Box Gutter Profile



Natural



GREENCOAT[®]
COLORFUL STEEL

Gutter Size	Pipe Size
mm	mm
250	80
280	80
333	100
400	120



Round & Square Pipes Profile



Half Round & Box Gutter Profile



**Assorted
Colours**

Wide range of colours available. Please contact sales@almhm.co.uk for a list of all colours and finishes in the Greencoat range









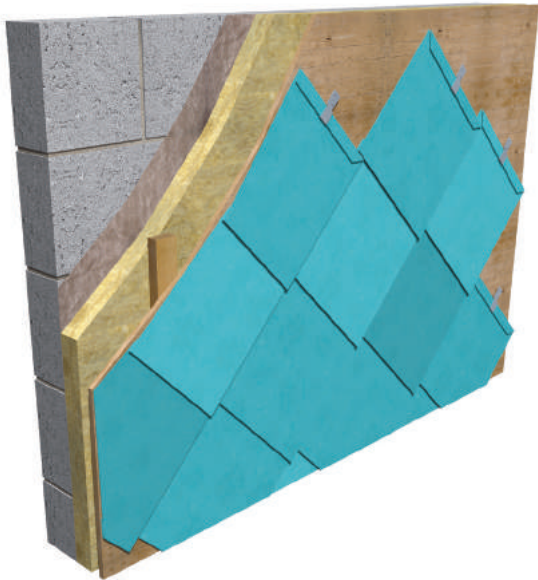
fabrications

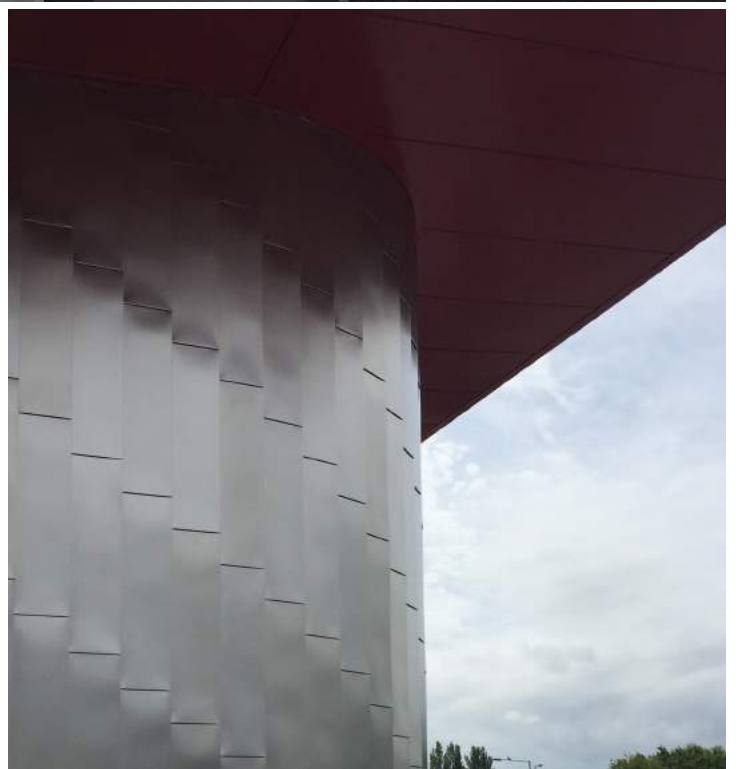
Bespoke Fabrications

In addition to manufacturer supplied standard factory systems, ALM can offer the full range of materials in many bespoke fabrications including interlocking panels, flatlock panels and various shaped shingles in both modern and traditional styles.

Please call the sales office to discuss any requirements

sales@almhm.co.uk
01992 801927







ancillary products



WARMFAST[®]

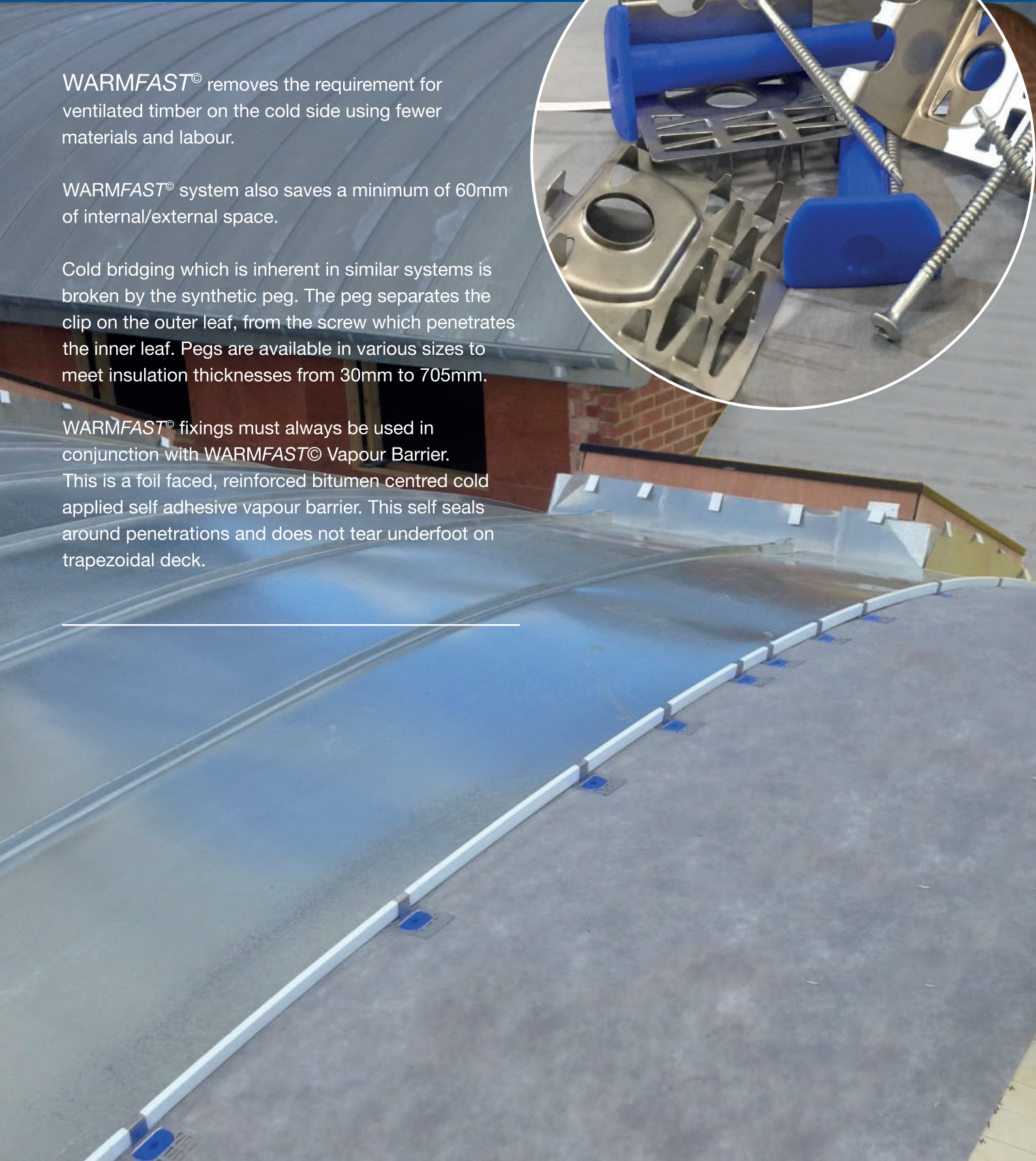
Fixing and Vapour Barrier

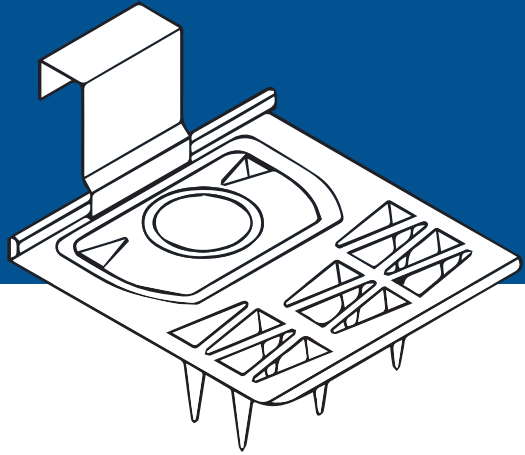
WARMFAST[®] removes the requirement for ventilated timber on the cold side using fewer materials and labour.

WARMFAST[®] system also saves a minimum of 60mm of internal/external space.

Cold bridging which is inherent in similar systems is broken by the synthetic peg. The peg separates the clip on the outer leaf, from the screw which penetrates the inner leaf. Pegs are available in various sizes to meet insulation thicknesses from 30mm to 705mm.

WARMFAST[®] fixings must always be used in conjunction with WARMFAST[®] Vapour Barrier. This is a foil faced, reinforced bitumen centred cold applied self adhesive vapour barrier. This self seals around penetrations and does not tear underfoot on trapezoidal deck.





WARMFAST Sliding Plates

Warmfast Sliding plates Stainless Steel 500

WARMFAST Fixed Plates

Warmfast Fixed Plates Stainless Steel 250
 Warmfast Fixed plates Galvanised 250

WARMFAST PEGS Plastic

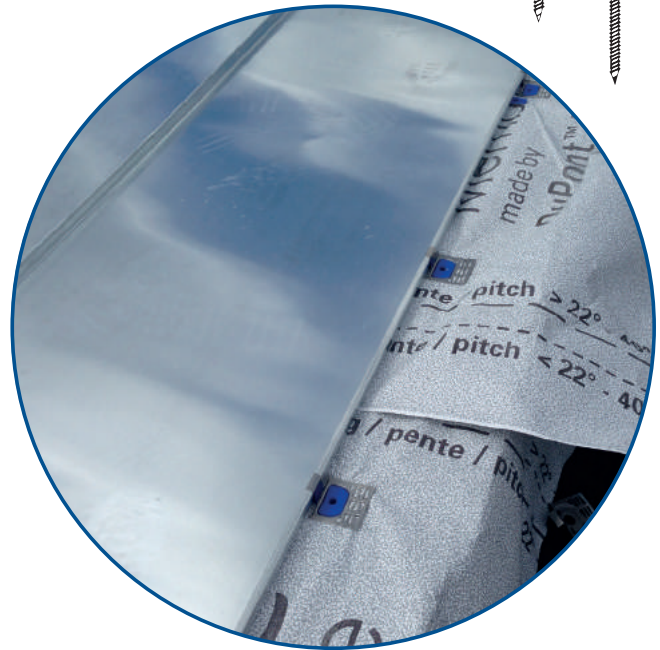
H30	Sleeve, 30 mm	500
H50	Sleeve, 50 mm	500
H70	Sleeve, 70 mm	500
H90	Sleeve, 90 mm	500
H110	Sleeve, 110 mm	500
H130	Sleeve, 130 mm	500
H160	Sleeve, 160 mm	500
H190	Sleeve, 190 mm	500
H220	Sleeve, 220 mm	250
H250	Sleeve, 250 mm	250
H280	Sleeve, 280 mm	250
H310	Sleeve, 310 mm	250
H405	Sleeve, 405 mm	100
H485	Sleeve, 485 mm	100
H565	Sleeve, 565 mm	100
H645	Sleeve, 645 mm	100
H705	Sleeve, 705 mm	100



TORX DRIVER Double ended

TORX SCREWS

LS50	Screw, 50 mm	500
LS60	Screw, 60 mm	500
LS70	Screw, 70 mm	500
LS90	Screw, 90 mm	500
LS110	Screw, 110 mm	500
LS120	Screw, 120 mm	500
LS130	Screw, 130 mm	250
LS140	Screw, 140 mm	250
LS150	Screw, 150 mm	250
LS190	Screw, 190 mm	250
LS200	Screw, 200 mm	250
LS220	Screw, 220 mm	250
LS240	Screw, 240 mm	100
LS260	Screw, 260 mm	1
LS300	Screw, 300 mm	1



WARMFAST VAPOUR BARRIER

VAPOUR BARRIER 40lm x 1080mm stock item

WARMFAST®
 Fixing and Vapour Barrier

LINITHERM®

Dämmsysteme



PUR/PIR rigid foam acc. to DIN EN 13165, class E, coated with aluminum film on both sides derived wood panel, 22 mm thick, coated, for mounting the metal roofing
Tongue & groove pressfit joints on all sides, plus OSB panel with tongue & groove.
When constructing the sub-roof and the entire roof structure, the rules, instructions and guidelines in the separate Linzmeier data sheet must be observed. Composite board made of: PUR-EN 13165-T2-DS(TH)9-CS(10\Y)100 plus 22 mm thick derived wood panel 2420 x 580 mm (= calculation measurement)



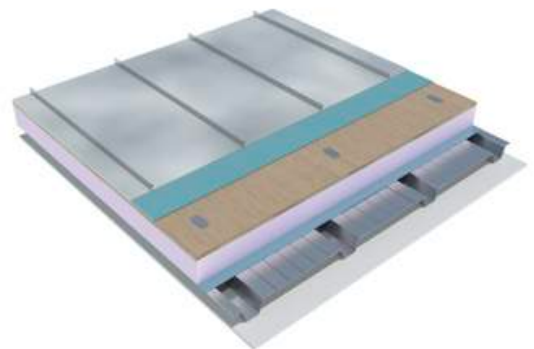
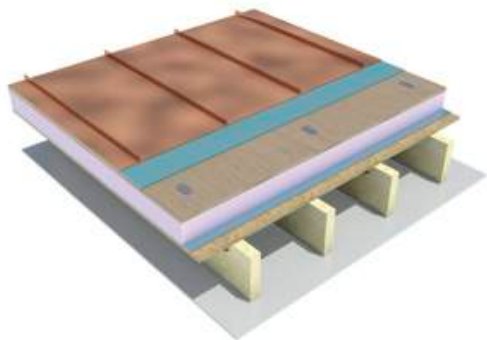
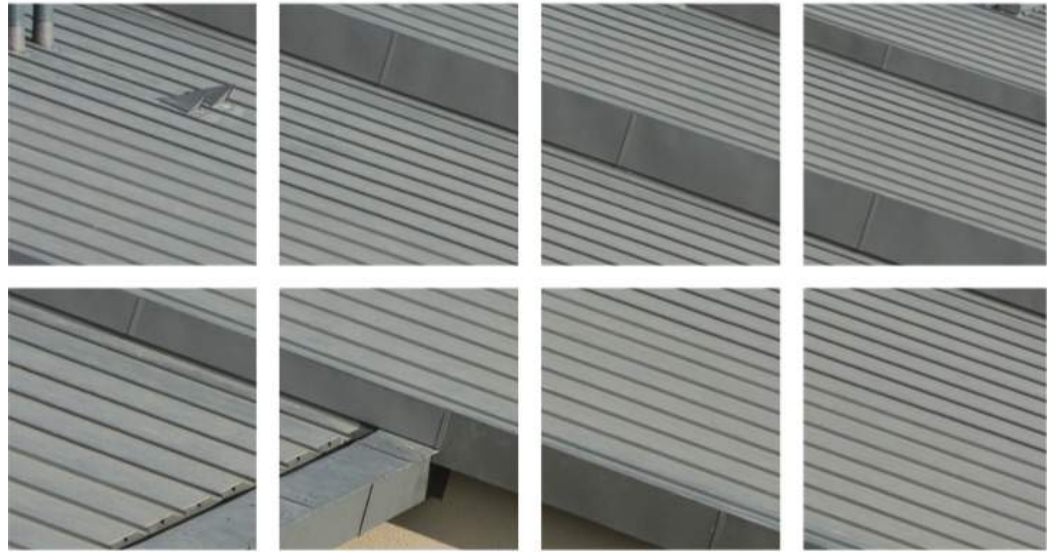
Insulation core: PUR/PIR rigid foam in accordance to DIN EN 13165, class E, with mineral fleece on both sides, insulation element slit above and below Edge connection: round about edgeless. Please note: Vapour barrier to be fitted on site.
When constructing the roof substructure and the entire roof system the specialist rules must be observed.
Identification according to EN: PUR-EN 13165-T2-DS(TH)9-CS(10\Y)100
Overall dimension: 2440 x 1200 mm (= calculation measurement)

THK mm Total	THK mm PUR/PIR	THK mm OSB board	U-value** (W/M²K)
102	80	22	0.25
122	100	22	0.21
142	120	22	0.18
162	140	22	0.15
182	160	22	0.14

Palette Qty	Qty M²	TCL PUR/PIR	U-value** (W/M²K)
21	29.5	23	0.25
17	23.9	23	0.21
15	21.1	23	0.18
13	18.2	23	0.15
11	15.4	23	0.14

THK mm	Pallet	Qty M²	TCL PUR/PIR	U-value** (W/M²K)
PUR/PIR	40	117.1	27	
60mm	30	87.8	29	
80mm				
examples				
60+60				0.24
60+80				0.20
80+80				0.18

Metdeck™

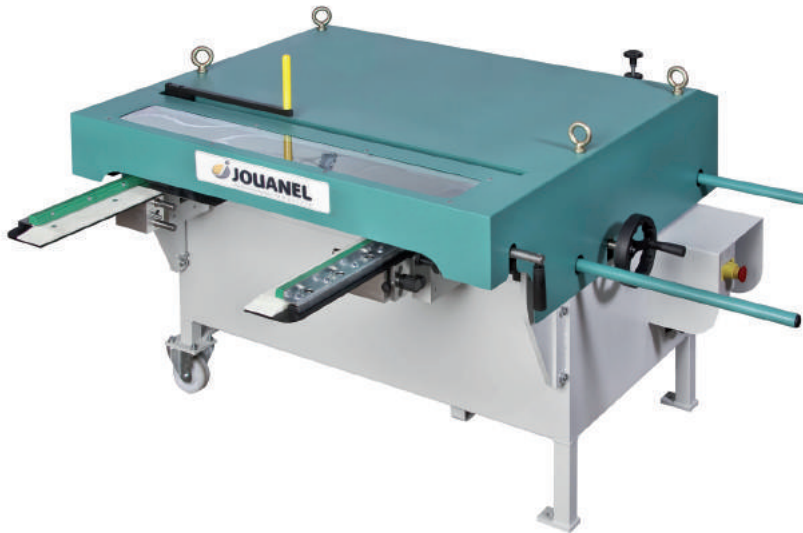


Metdeck168	(150 kooltherm +18mm ply)
Metdeck158	(140 kooltherm +18mm ply)
Metdeck148	(130 kooltherm +18mm ply)
Metdeck138	(120 kooltherm +18mm ply)
Metdeck118	(100 kooltherm +18mm ply)
Metdeck108	(90 kooltherm +18mm ply)
Metdeck98	(80 kooltherm +18mm ply)
Metdeck88	(70 kooltherm +18mm ply)
Metdeck68	(50 kooltherm +18mm ply)
Metdeck58	(40 kooltherm +18 mm ply)
Metdeck48	(30 kooltherm +18mm ply)

ALM HM are the main contact for various insulations and can obtain all sizes and thicknesses

Tooling

metalroofingtools.co.uk



The UK's Jouanel machinery supplier

Jouanel roll formers and folding machines in stock

Full Jouanel and Freund range available upon request



The UK's Freund tool supplier

The complete hard metal installer starter kit

Items may differ in appearance from those shown



metalroofingtools.co.uk

Also available, tools from...





Patination Oil, Lead Slates, Flexislates, ARS Nails, Wood Cored Roll, Underlays, Expansion Joint, Lead Restorers, Flashpoint Sealant, Hall Clips.

To ensure that guarantees are upheld for Envirolead EN 12588 Rolled Lead, LSA approved Premium Roofing Ancillary Products range should be used.

For BBA Approved Royston Specialist Cast Rolled lead, Premium Roofing Products should also be used to ensure a quality fit with maximum life expectancy.



premiumroofing.net

sales@almhm.co.uk
01992 801927

**Underlays
Solders
Fluxs
Fluids
Cleaners
Saddle pieces
Nails
Expansion joints
Clips
Fixings
Tapes
Adhesives**

Leading brands available
please call 01992 801927 or
email sales@almhm.co.uk
with any enquiries

ALM HM

A POSITIVE PARTNERSHIP



Training Opportunities



If you are interested in training to become a specialist installer or perhaps enhance the skills you already have please contact our office to register your interest.

We are dedicated to the development of skilled craftspeople for the installation of both lead and hard metals.

Material finishes and design characteristics are being constantly updated, and we are able to offer our own bespoke in-house training days, in our state of the art facility, where the theory and practical aspects of these changes can be fully explained.

We work constantly and closely with all associations, leading brands and their trainers ensuring that those we work with are effectively trained and kept up to date with new developments.





**Call now for more information or to
arrange a training session 01992 444100**

Jamestown Metals Ltd

Naysmith Road South
Hillington Ind Est
Glasgow
G52 4RE
sales@jamestownmetals.com
Phone 01992 801910
Fax 01992 801911

Royston Lead Ltd

Pogmoor Works
Stocks Lane
United Kingdom
S75 2DS
sales@roystonlead.com
Phone 01226 776403
Fax 01226 730359

Jamestown Metals Ltd

Pogmoor Works
Stocks Lane
United Kingdom
S75 2DS
sales@jamestownmetals.com
Phone 01992 801910
Fax 01992 801911

**Associated Lead Mills
Hard Metals - North**

Silverwood Industrial Est
Craigavon, Co, Armagh
BT66 6LN
more@metseam.com
Phone 02838 325757

**Associated Lead Mills
Hard Metals - South**

Jamestown Road
Inchicore
Dublin 8
sales@almhm.ie
Phone +35 314201718
Fax +353 1 4549640

Jamestown Metal Resources Ltd

Jamestown Road
Inchicore
Dublin 8
sales@jamestownlead.com
Phone +35 314201714
Fax +353 1 4549640

Associated Lead Mills Ltd

Unit B, Bingley Rd
Hoddesdon
Hertfordshire
EN11 ONX
sales@leadsales.co.uk
Phone 01992 444100
Fax 01992 444150

**Associated Lead Mills
Hard Metals**

Grange House, Geddings Rd
Hoddesdon
Hertfordshire
EN11 ONT
sales@almhm.co.uk
Phone 01992 801927
Fax 01992 461665

We would like to take this opportunity to thank all of our customers for their valued business and our supply partners for their continued support and contribution to this 3rd edition of The Metal Pages. We welcome your feedback to help continually improve further editions, 01992 444100